
TECHNICAL MANUAL

DIRECT AND GENERAL SUPPORT AND DEPOT MAINTENANCE
REPAIR PARTS AND SPECIAL TOOLS LISTS

AIR CONDITIONER; VERTICAL COMPACT, FLOOR MOUNTED,
36,000 BTU/HR COOLING, 30,000 BTU/HR HEATING;
208 VOLT, 3 PHASE, 50/60 HERTZ,
(TRANE MODEL MAC 6V40-340-2)
FSN 4120-935-5421, 208 VOLT, 3 PHASE, 400 HERTZ
(TRANE MODEL MAC 4V40-340-3)
FSN 4120-935-5418

This copy is a reprint which includes current
pages from Change 1.

CHANGE
No. 1



HEADQUARTERS
DEPARTMENT OF THE ARMY
WASHINGTON, D.C., 25 March 1987

Direct and General Support and Depot Maintenance
Repair Parts and Special Tools Lists

AIR CONDITIONER; VERTICAL COMPACT, FLOOR MOUNTED,
36,000 BTU/HR COOLING, 30,000 BTU/HR HEATING;
208 VOLT, 3 PHASE, 50/60 HERTZ,
(TRANE MODEL MAC 6V40-340-2)
FSN 4120-935-5421, 208 VOLT, 3 PHASE, 400 HERTZ
(TRANE MODEL MAC 4V40-340-3)
FSN 4120-935-5418

TM 5-4120-268-35P, September 1970, is changed as follows:

Page 24, figure 14, item 5, SMR is changed to read "PAOZZ," and Ref. No. and MFR Code is changed to read "13214E4002 (97403)."

Page 24, figure 14, item 5, add to column 3, "Counterclockwise Rotation."

Page 24, figure 14, item 6, SMR is changed to read "PAOZZ" and Ref. No. and MFR Code is changed to "13214E4001 (97403)."

Page 24, figure 14, item 6, add to column 3, "Clockwise Rotation."

Page 25, figure 14, item 10, Part Number is changed to read "02-010999-202."

Page 25, figure 14, item 10, add FSN "3110-00-124-9076."

Page 42, add Stock Number "3110-00-124-9076", Fig. No. "14" and Item No. "10."

Page 44, Section IV, delete Ref. No. "Fan 183," MFR Code "60532," Fig. No. "14" and Item No. "5."

Page 44, delete Ref. No. "Fan 296," MFR Code "60532," Fig. No. "14" and Item No. "6."

Page 45, add Ref. No. "13214E4002," MFR Code "97403," Fig. No. "14" and Item No. "5".

Page 45, add Ref. No. "13214E4001," MFR Code "97403," Fig. No. "14" and Item No. "6".

Page 45, delete Ref. No. "01-005-248-084," MFR Code "64731," Fig. No. "14" and Item No. "10."

Page 45, add Ref. No. "02-010-999-202," MFR Code "64731," Fig. No. "14" and Item No. "10."

By Order of the Secretary of the Army:

Official:

JOHN A. WICKHAM, JR.
General, United States Army
Chief of Staff

R. L. DILWORTH
Brigadier General, United States Army
The Adjutant General

DISTRIBUTION:

To be distributed in accordance with DA Form 12-25A, Direct Support and General Support Maintenance requirements for Air Conditioner, Floor Mounted, Vertical Compact, 36,000 BTU Cool/30,000 BTU Heat, 208V, 3PH (MAC 4V40-340-3, 400HZ; MAC 6V40-340-2, 50/60 HZ).



**DIRECT AND GENERAL SUPPORT AND DEPOT MAINTENANCE
 REPAIR PARTS AND SPECIAL TOOLS LIST**

**AIR CONDITIONER; VERTICAL COMPACT, FLOOR MOUNTED,
 36,000 BTU/HR COOLING, 30,000 BTU/HR HEATING; 208
 VOLT, 3 PHASE, 50/60 HERTZ, (TRANE MODEL MAC
 6V40-340-2) FSN 4120-935-5421, 208 VOLT, 3 PHASE, 400
 HERTZ, TRANE MODEL MAC 4V40-3403) FSN 4120-9355418**

Current as of 13 April 1970

		Paragraph	Page		
SECTION I.	INTRODUCTION		iii		
	Scope	1	iii		
	General	2	iii		
	Explanation of columns.....	3	iii		
	Special information	4	v		
	How to locate repair parts.....	5	v		
	Abbreviations	6	vi		
	Federal supply codes for manufacturers.....	7	vi		
	Recommendations for maintenance publications improvements	8	vi		
				Listing	Illus.
				Page	Fig.
Group	II. REPAIR PARTS FOR DS, GS, AND DEPOT MAINTENANCE	1			
	01. Casing and Related Parts.....	1			
	Casing, panels, grilles and mist eliminator.....		1		
	Damper control, filter, grille, panel and guard.....		2		
	02. Control Panel & Junction Box.....	7			
	Control panel		3		
	Junction box, transformer and wiring harnesses		4		
	Panel assembly.....		5		
	Filter assembly.....		6		
	03. Compressor	13			
	Compressor assembly.....		7		
	Compressor electrical components.....		8		
	04. Pressure Control Switches	15			
	Pressure control switches.....		9		
	05. Refrigeration Components and Condensate Drain.....	16			
	Evaporator, valves, tubes and fittings.....		10		
	Condenser, dehydrator, receiver, valves, tubes and fittings.....		11		
	06. Heater Assembly	22			
	Heater assembly		12		
	07. Fans and Motors	23			
	Condenser fan and motor.....		13		
	Evaporator fan and motor		14		
	08. Wiring Harnesses.....	25			
SECTION III.	SPECIAL TOOLS, TEST AND SUPPORT EQUIPMENT FOR DS, GS, AND DEPOT MAINTENANCE (Not Applicable)				
SECTION IV.	FEDERAL STOCK NUMBER AND REFERENCE NUMBER INDEX.....	42			

**SECTION I.
INTRODUCTION**

1. Scope

This manual lists repair parts, special tools, test and support equipment required for the performance of direct support, general support, and depot maintenance of the air conditioner

2. General

This repair parts and special tools list is divided into the following sections:

a. Repair Parts-Section II. A list of repair parts authorized for the performance of maintenance at the direct support, general support, and depot level in figure and item number sequence.

b. Special Tools, Test and Support Equipment - Section III. (Not Applicable)

c. Federal Stock Number and Reference Number Index - Section IV. A list of Federal stock numbers in ascending numerical sequence followed by a list of reference numbers in ascending alpha-numeric sequence, cross-referenced to the illustration figure number and item number.

Note Items not illustrated are cross-referenced to group number

3. Explanation of Columns

The following provides an explanation of columns in the tabular lists in sections II and III.

a. Source, Maintenance, and Recoverability Codes (SMR).

(1) Source code indicates the selection status and source for the listed item. Source codes used are:

<i>Code</i>	<i>Explanation</i>
P	Repair Parts, Special Tools and Test Equipment supplied from the G,SA/DSA, or Army supply system, and authorized for use at indicated maintenance categories.
P2	Repair Parts, Special Tools and Test Equipment which are procured and stocked for insurance purposes because the combat or military essentiality of the end item dictated that a minimum quantity be available in the supply system.
M	Repair Parts, Special Tools and Test Equipment which are not procured or stocked, as

<i>Code</i>	<i>Explanation</i>
	such, in the supply system but are to be manufactured at indicated maintenance levels.
A	Assemblies which are not procured or stocked as such, but are made up of two or more units. Such component units carry individual stock numbers and descriptions, are procured and stocked separately and can be assembled to form the required assembly at indicated maintenance categories.
X	Parts and assemblies that are not procured or stocked because the failure rate is normally below that of the applicable end item or component. The failure of such part or assembly should result in retirement of the end item from the supply system.
X1	Repair parts which are not procured or stocked. The requirement for such items will be filled by the next higher assembly or component.
X2	Repair Parts, Special Tools, and Test Equipment which are not stocked and have no foreseen mortality. The indicated maintenance category requiring such repair parts will attempt to obtain the parts through cannibalization or salvage, the item may be requisitioned with exception data, from the end item manager, for immediate use.
G	Major assemblies that are procured with PEMA funds for initial issue only as exchange assemblies at DSU and GSU level. These assemblies will not be stocked above the DS and GS level or returned to depot supply level.
R	Applied to repair parts, (assemblies and components) special tools and test equipment which are considered economically repairable at direct and general support maintenance levels. When the item is no longer economically repairable, it is normally disposed of at the GS level. When supply considerations dictate, some of these repair parts may be listed for automatic return to supply for depot level repair as set forth in AR 710-50. When so listed, they will be replaced by supply on an exchange basis.
S	Repair Parts, Special Tools, Test Equipment and assemblies which are economically repairable at DSU and GSU activities and which normally are furnished by supply on an exchange basis. When items are determined by a GSU to be uneconomically repairable, they will be evacuated to a depot for evaluation and analysis before final disposition.

Code	Explanations
T	Higher dollar value recoverable repair parts, special tools and test equipment which are subject to special handling and are issued on an exchange basis. Such items will be repaired or overhauled at depot maintenance activities only. No repair may be accomplished at lower levels.
U	Repair Parts, Special Tools and Test Equipment specifically selected for salvage by reclamation units because of precious metal content, critical materials, high dollar value or reusable casings or castings.

(2) Maintenance code indicates the lowest category of maintenance authorized to install the listed item. Repair parts and special tools assigned maintenance code "C" may be stocked at the operator level of maintenance when authorized by the Unit Commander. The maintenance level codes are:

Code	Explanation
C.....	Operator/crew
O.....	Organizational maintenance
F.....	Direct support maintenance
H.....	General support maintenance
D.....	Depot maintenance

(3) Recoverability code indicates whether unserviceable items should be returned for recovery or salvage. Items not coded are expendable. Recoverability codes are:

Code	Explanation
R	Applied to repair parts (assemblies and components) which are considered economically repairable at direct and general support maintenance levels. When the maintenance capability to repair these items does not exist, they are normally disposed of at the GS level. When supply considerations dictate, some of these repair parts may be listed for automatic return to supply for depot level repair as set forth in AR 710-50. When so listed, they will be replaced by supply on an exchange basis.
S	Repair parts and assemblies which are economically repairable at DSU and GSU activities and which are normally furnished by supply on an exchange basis. When items are determined by a GSU to be uneconomically repairable, they will be evacuated to a depot for evaluation and analysis before final disposition.
T	High dollar value recoverable repair parts which are subject to special handling and are issued on an exchange basis. Such repair parts normally are repaired or overhauled at depot maintenance activities.
U	Repair parts specifically selected for salvage by reclamation units because of precious metal content, critical materials, or high dollar value reusable casings or castings.

b. *Federal Stock Number.* This column indicates the Federal stock number assigned to the item and will be used for requisitioning purposes.

c. *Description.* This column indicates the Federal item name and any additional description of the item required. Assembly components and subassemblies are indented under major assemblies. The abbreviation "w/e" when used as a part of the nomenclature indicates the Federal stock number includes all armament, equipment, accessories, and repair parts issued with the item. A part number or other reference number is followed by the applicable five-digit Federal supply code for manufacturers in parenthesis. Repair parts quantities included in kits and sets are shown in front of the repair part name. Material required for manufacture or fabrication is identified.

d. *Unit of Measure (U/M)* A two-character alphabetic abbreviation indicating the amount or quantity of the item upon which the allowances are based, e.g., ft, ea, pr, etc.

e. *Quantity Incorporated in Unit.* This column indicates the quantity of the item used in the assembly group. A "V" appearing in this column in lieu of a quantity indicates that a definite quantity cannot be indicated (e.g., shims, spacers, etc.).

f. *Thirty-Day DS/GS Maintenance Allowances.*

Note. Allowances in GS column are for GS maintenance only

(1) The allowance columns are divided into three subcolumns. Indicated in each subcolumn, opposite the first appearance of each item, is the total quantity of items authorized for the number of equipments supported. Subsequent appearances of the same item will have the letters "REF" in the applicable allowance column. To locate the referenced item, locate the FSN or reference number in the index. The earliest figure and item number is the referenced item. Items authorized for use as required but not for initial stockage are identified with an asterisk in the allowance column.

(2) The quantitative allowances for DS/GS levels of maintenance will represent initial stockage for a 30-day period for the number of equipments supported.

(3) To determine allowances when supporting more than 100 of these equipments: First, divide the number of equipments supported by 100 by moving the decimal two places

left; second, multiply the result by the quantity in the 51-100 density column. Example, authorized allowance for 51-100 equipments is 40; for 150 equipments multiply 40 by 1.50 or 60 parts required.

g. One-Year Allowance Per 100 Equipments/Contingency Planning Purposes. This column indicates opposite the first appearance of each item the total quantity required for distribution and contingency planning purposes. The range of items indicates total quantities of all authorized items required to provide for adequate support of 100 equipments for one year. Subsequent appearances of the same item will have the letters "REF" in the allowance column. To locate the referenced item, locate the FSN or reference number in the index. The earliest figure and item number is the referenced item

h. Depot Maintenance Allowance Per 100 Equipments. This column indicates opposite the first appearance of each item the total quantity authorized for depot maintenance of 100 equipments. Subsequent appearances of the same item will have the letters "REF" in the allowance column. To locate the referenced item, locate the FSN or reference number in the index. The earliest figure and item number is the referenced item. Items authorized for use as required but not for initial stockage are identified with an asterisk in the allowance column.

i. Illustration. This column is divided as follows:

(1) *Figure number.* Indicates the figure number of the illustration in which the item is shown.

(2) *Item number.* Indicates the callout number used to reference the item in the illustration.

4. Special Information

a. Identifications of the usable on codes included in the description column of this publication are: (Applicable only when identifying parts to particular serial number range or model)

<i>Code</i>	<i>Used on</i>
A.....	Model MAC 6V40-340-2
B.....	Model MAC 4V40-340-3

b. Repair parts mortality has been based on 7200 hours operation per year.

c. Parts which require manufacture or assembly at a category higher than that authorized for installation will indicate in the source column the higher category.

d. The following publications pertain to the air conditioners and their component.

TM 5-4120-268-15 Operator, Organizational, DS, GS, and Depot Maintenance Manual

TM 5-4120-268-20P Organizational Maintenance Repair Parts and Special Tools List

5. How to Locate Repair Parts

a. When Federal Stock Number or Reference Number is Unknown:

(1) *First.* Using the table of contents, determine the assembly group within which the repair part belongs. This is necessary since illustrations are prepared for assembly groups, and listings are divided into the same groups.

(2) *Second.* Find the illustration covering the assembly group to which the repair part belongs.

(3) *Third.* Identify the repair part on the illustration and note the illustration figure number and item number of the repair part.

(4) *Fourth.* Using the Repair Parts Listing, find the Assembly group to which the repair part belongs and locate the illustration figure and item number noted on the illustration.

b. When the Federal Stock Number or Reference Number is Known:

(1) *First.* Using the Index of Federal Stock Numbers and Reference Numbers find the pertinent Federal stock number or reference number. This index is in ascending FSN sequence followed by a list of reference numbers in ascending alpha-numeric sequence, cross-referenced to the illustration figure number and item number.

(2) *Second.* Using the Repair Part Listing, find the assembly group of the repair part and the illustration figure number and item number referenced in the Index of Federal Stock Numbers and Reference Numbers.

c. When the Federal Stock Number or Reference Number is Known and the Repair Part is not Illustrated:

(1) *First.* Using the Index of Federal Stock Numbers and Reference Numbers find the pertinent Federal stock Number or reference number in the section titled "Items Not Illustrated" and note the group number. This section is in ascending FSN sequence followed by a list of reference numbers in alpha-numeric sequence, cross-referenced to assembly group number.

(2) *Second.* Using the Table of Contents, locate the assembly group number and page number.

(3) *Third.* Using the applicable group number and page number, locate the pertinent stock number or reference number in the Repair Parts Listing. Items which are not illustrated are listed at the end of the assembly group to which they belong.

6. Abbreviations

- amp amperes
- assy assembly
- dia diameter
- hex..... hexagon
- hd head
- id..... inside diameter
- in..... inch (es)
- lg long (length)
- mtg mounting
- od outside diameter
- thd thread
- thk..... thick (ness)

7. Federal Supply Codes for Manufacturers

<i>Code</i>	<i>Manufacturer</i>
06151.....	Dialtron Corp
12881.....	Metex Corp
15605.....	Cutler-Hammer, Inc.
15653.....	Kaynar Mfg Co.
22694.....	Reid Hill Electronic Inc
31234.....	Edco Sales Inc
41947.....	Mueller Brass Co.
56289.....	Sprague Electric Co.
58553.....	Superior Valve and Fittings Co.
58849.....	Syntron Co.
60532.....	Trane Co., The
61957.....	United Shoe Machinery Corp
64731.....	Welco Industries, Inc.
70255.....	Alco Valve Co.
71286.....	Camloc Fastener Corp
71400.....	Bussman Mfg Division of McGraw Edison Co.

<i>Code</i>	<i>Manufacturer</i>
74193.....	Heinemann Electric Co.
75382.....	Kulka Electric Corp
78189.....	Shakeproof Division of Illinois Tool Works, Inc.
78462.....	Sporlan Valve Co.
78553.....	Tinnerman Products Inc.
79499.....	Western Felt Works
80205.....	National Aerospace Standards Committee
	Aeronautical Industries Association of America
81349.....	Military Specifications Promulgated by Standardization Div., Directorate of Logistic Services DSA
81997.....	Controls Co., of America Appliance and Automotive Division
82646.....	Spencer Safford Loadcraft, Inc.
82647.....	Metals and Controls, Inc, Control Products Group
86797.....	Rogan Co.
88044.....	Aeronautical Standards Group, Dept of Navy and Air Force
90763.....	United Carr Fastener Corp
92164.....	Tested Appliance Co.
92578.....	Penn Controls, Inc.
93232.....	Worthington Corp
93781.....	Jacks Evans Manufacturing Co.
94222.....	South Chester Corp
96906.....	Military Standards Promulgated by Standardization Div, Directorate of Logistic Services DSA

8. Recommendations for Maintenance Publication Improvements

Report of errors, omissions, and recommendations for improving this publication by the individual user is encouraged. Reports should be submitted on DA Form 2028 (Recommended Changes to Publications) and forwarded direct to Commanding General, U. S. Army Mobility Equipment Command, ATTN: AMSME-MPP, 4300 Goodfellow Boulevard, St. Louis, Mo. 63120.

(1) SMR CODE	(2) FEDERAL STOCK NUMBER	(3) DESCRIPTION USABLE ON CODE	(4) UNIT OF MEAS	(5) QTY INC IN UNIT	(6) 30 DAY DS MAINT ALLOWANCE			(7) 30 DAY GS MAINT ALLOWANCE			(8) 1-YR ALW PER 100 EQUIP CNTGY	(9) DEPOT MAINT ALW PER 100 EQUIP	(10) ILLUS- TRATION	
					(a)	(b)	(c)	(a)	(b)	(c)			(a)	(b)
					1-20	21-50	51-100	1-20	21-50	51-100			FIG.	ITEM NO.
		SECTION II - REPAIR PARTS FOR DS, GS AND DEPOT MAINTENANCE												
		GROUP 01 - CASING AND RELATED PARTS												
P O	5305-980-6191	SCREW, MACHINE: NO. 8-32 THD SIZE, 5/8 IN. LG MS35206-26 (96906)	EA	39	*	*	*	*	*	*		*	1	1
P O	5310-011-4986	WASHER, FLAT: NO. 8 SCREW SIZE MS27183-7 (96906)	EA	72	*	*	*	*	*	*		*	1	2
X20		TURNLOCK. FASTENER: CANVAS COVER MTG XX78328-20 (90763)	EA	2									1	3
X20		PANEL ASSEMBLY, TOP C4525-549 (60532)	EA	1									1	
P O		RIVET BLIND AK41H (61957)	EA	20	*	*	*	*	*	*		*	1	4
X20		NUT, SELF-LOCKING: PLATE F39155-08 (15653)	EA	10									1	5
X20		NUT, SELF-LOCKING: PLATE, FASTENER MTG, NO. 10-32 THD SIZE F39155-3 (15653)	EA	2									1	6
X1		PANEL B4525-537-1 (60532)	EA	1									1	7
M O		INSULATION: PANELS, CASING C4525-326-1 (606532) MANUFACTURE FROM: INSULATION, SHEET, 1/2 IN. THK, AS REQUIRED, FSN 5640-785-7788											1	8
M O		INSULATION: PANEL MANUFACTURE FROM: INSULATION, SHEET, 5/16 IN. THK, AS REQUIRED, FSN 5640-198-7255											1	9
P O	5305-984-6195	SCREW, MACHINE: NO. 8-32 THD SIZE, 3/4 IN. LG MS35206-217 (96906)	EA	24	*	*	*	*	*	*		*	1	10
X20		GRILLE ASSEMBLY, DISCHARGE A4525-803 (60532)	EA	1									1	11
M O		GASKET, RUBBER: PANELS, GRILLES C4525-703-2 (60532) MANUFACTURE FROM: ROLL, RUBBER, 1/8 X 1 IN., AS REQUIRED, FSN 9320-935-2036											1	12
P O		MIST ELIMINATOR B4525-770 (60532)	EA	1	*	*	2	*	*	2	6	5	1	13
X20		GRILLE ASSEMBLY, INTAKE A4525-00 (60532)	EA	1									1	14
X20		PANEL ASSEMBLY: LOWER FRONT 514525-391 (60532)	EA	1									1	
X20		SCREW ASSEMBLY 12-11-63-12 (94222)	EA	3									1	15
X20		WASHER, RETAINING: PANEL MTG 12-11014-12 (94222)	EA	5									1	16
X20		SCREW ASSEMBLY: PANEL MTG 12-11-504-12 (92222)	EA	2									1	17
X20		PLATE, HOLDING: INSULATION BOARD D4525-231-1 (60532)	EA										1	18

(1) SMR CODE	(2) FEDERAL STOCK NUMBER	(3) DESCRIPTION USABLE ON CODE	(4) UNIT OF MEAS	(5) QTY INC IN UNIT	(6) 30 DAY DS MAINT ALLOWANCE			(7) 30 DAY GS MAINT ALLOWANCE			(8) 1-YR ALW PER 100 EQUIP CNTGY	(9) DEPOT MAINT ALW PER 100 EQUIP	(10) ILLUS- TRATION	
					(a)	(b)	(c)	(a)	(b)	(c)			(a)	(b)
					1-20	21-50	51-100	1-20	21-50	51-100			FIG. NO.	ITEM NO.
X20		INSULATION BOARD C4525-392-1 (60532)	EA	1									1	19
X20		INSULATION BOARD C4525-391-1 (60532)	EA	1									1	20
X1		PANEL B1525-393-1 (60532)	EA	1									1	21
X20		BAFFLE ASSEMBLY: LOWER FRONT PANEL C4525-124 (60532)	EA	1									1	
X20		TURNLOCK FASTENER 40S37-7 (71286)	EA	4									1	22
X1		BAFFLE 04525-123-1 (60532)	EA	1									1	23
X20		EYELET 4002N (71286)	EA	4									1	24
X20		RING, RETAINING R4G (71286)	EA	4									1	25
X20		RECEPTACLE, TURNLOCK FASTENER 244-16 (71286)	EA	1									1	26
P O	5305-984-6193	SCREW, MACHINE: SCREEN SUPPORT MTG, NO. 8-32 THD SIZE, 1/2 IN. LG MS35206-245 (96906)	EA	5	*	*	*	*	*	*	*		1	27
P O	5310-005-3299	WASHER, LOCK: NO. 8 SCREW SIZE MS3533&82 (96906)	EA	5	*	*	*	*	*	*	*		1	28
X20		ANGLE: FILTER SUPPORT C4525-524-1 (60532)	EA	1									1	29
P O	4130-193-8488	FILTER, RETURN AIR AL18-4-5 (31234)	EA	1	2	2	2	2	2	2	24	100	1	30
X2H		CASE ASSEMBLY E4525-632 (60532)	EA	1									1	31
P O	5305-989-7435	SCREW, MACHINE: BAFFLE MTG, NO. 10-32 THD SIZE, 5/8 IN. LG MS35207-264 (96906)	EA	10	*	*	*	*	*	*	*		1	32
P O	5310-045-3296	WASHER, LOCK: BAFFLE MTG, NO. 10 SCREW SIZE MS35338-43 (96906)	EA	10	*	*	*	*	*	*	*		1	33
P O	5310-809-8546	WASHER, FLAT: BAFFLE MTG, NO. 10 SCREW SIZE MS27183-8 (96906)	A	10	*	*	*	*	*	*	*		1	34
X20		BAFFLE: LH B4525-316-1 (60532)	EA	1									1	35
X20		BAFFLE: RH E4525-317-1 (60532)	EA	1									1	35
X20		RING, INLET: EVAPORATOR FAN C-525-68-1 (60532)	EA	2									1	36
P O	5306-225-9089	SCREW, CAP, HEXAGON HEAD: SUPPORT WTG, 5/16-21 THD SIZE, IN. LG MS90726-34 (96906)	EA	4	*	*	*	*	*	*	*		1	37
P O	5310-081-4219	WASHER, FLAT: SUPPORT MTG, 5/6 IN. SCREW SIZE MS27183-12 (96906)	EA	4	*	*	*	*	*	*	*		1	38
X20		SHIN, ADJUSTING: EVAPORATOR FAN MOTOR, .063 1N. TK C4525-761-1 (60532)	EA	2									1	39
X20		SHIN, ADJUSTING: EVAPORATOR FAN MOTOR, .032 IN. TH C4525-761-2 (60532)	EA	2									1	40

(1) SMR CODE	(2) FEDERAL STOCK NUMBER	(3) DESCRIPTION USABLE ON CODE	(4) UNIT OF MEAS	(5) QTY INC IN UNIT	(6) 30 DAY DS MAINT ALLOWANCE			(7) 30 DAY GS MAINT ALLOWANCE			(8) 1-YR ALW PER 100 EQUIP CNTGY	(9) DEPOT MAINT ALW PER 100 EQUIP	(10) ILLUS- TRATION	
					(a)	(b)	(c)	(a)	(b)	(c)			(a)	(b)
					1-20	21-50	51-100	1-20	21-50	51-100			FIG. NO.	ITEM NO.
X20		SUPPORT: EVAPORATOR FAN MOTOR B4525-525 (60532)	EA	1								1	41	
P F	5305-989-7435	SCREW, MACHINE: BAFFLE MTG, NO. 10-32 THD SIZE, 5/8 IN. LG	EA	6								1	42	
P F	5310-045-3296	MS35207-264 (96906) WASHER, LOCK: BAFFLE MTG, NO. 10 SCREW SIZE	EA	6								1	43	
P F	5310-809-8546	MS35338-4 3 (96906) WASHER, FLAT: BAFFLE MTG, NO. 10 SCREW SIZE	EA	6	*	*	*	*	*	*	*	1	44	
X2F		MS27183-8 (96906) BAFFLE: EVAPORATOR, AIR C4525-567-1 (60532)	EA	2								1	45	
P H	5305-068-0505	SCREW, CAP, HEXAGON HEAD: BASE MTG, 1/4-28 THD SIZE, 5/8 IN. LG	EA	12				*	*	*		1	46	
P H	5310-809-1038	MS90726-5 (96906) WASHER, FLAT: BASE MTG, 1/4 IN. SCREW SIZE	EA	12				*	*	*		1	47	
X2H		MS27183-10 (96906) BASE ASSEMBLY B4525-4180 (60532)	EA	1								1		
X1		BASE ASSEMBLY WELD A4525-177 (60532)	EA	1								1	48	
X2H		NUT, CAGE: BASE TO SKID MTG, 7/16-14 THD SIZE	EA	4								1	49	
X2H		C7968-7614-541 (78553) RIVET, BLIND	EA	24								1	50	
X2H		AK12H (61957) NUT, SELF-LOCKING: PLATE, BASE, 1/4-28 THD SIZE	EA	12								1	51	
X2H		F39155-4 (15653) RIVET, BLIND	EA	6								1	52	
X2H		AK41H (61957) NUT, SELF-LOCKING: PLATE, NO. 10-32 THD SIZE	EA	3								1	53	
P H		F39155-3 (15653) NUT, BLIND RIVET: BASE, 8-32 THD SIZE	EA	6				*	*	*		1	54	
P O		M5S27131-15K (96906) PLUG, PIPE: BASE, CRAIN, 1/2 IN. SOCKET HEAD	EA	4	*	*	*	*	*	*		1	55	
P O	4130-469-6758	PLV128 (60532) BLOCKOFF ASSEMBLY; CONTROL PANEL APERTURE, LOWER FRONT PANEL	EA	1								1		
P O	5310-859-2544	B4525-249-21 (60532) NUT, SELF-LOCKING: HEXAGON, COVER MTG, NO. 6-32 THD SIZE	EA	8	*	*	*	*	*	*		1	56	
P O	5305-889-3000	M521045-06 (96906) SCREW, MACHINE: COVER MTG, NO. 6-32 THD SIZE, 1/2 IN. LG	EA	8	*	*	*	*	*	*		1	57	
X20		MS35200-230 (96906) COVER	EA	1								1	58	
X20		B4525-196-3 (60532) COVER	EA	1								1	59	
X1		B4525-196-2 (60532) BRACKET, BLOCKOFF C4525-2411-21 (60532)	EA	1								1	60	

(1) SMR CODE	(2) FEDERAL STOCK NUMBER	(3) DESCRIPTION USABLE ON CODE	(4) UNIT OF MEAS	(5) QTY INC IN UNIT	(6) 30 DAY DS MAINT ALLOWANCE			(7) 30 DAY GS MAINT ALLOWANCE			(8) 1-YR ALW PER 100 EQUIP CNTGY	(9) DEPOT MAINT ALW PER 100 EQUIP	(10) ILLUS- TRATION	
					(a)	(b)	(c)	(a)	(b)	(c)			(a)	(b)
					1-20	21-50	51-100	1-20	21-50	51-100			FIG. NO.	ITEM NO.
P O	5305-981-6194	SCREW, MACHINE: NO. 8-32 THD SIZE, 5/8 IN. LG	EA	68	*	*	*	*	*	*		*	2	1
X20		MS35206-246 (96906) COVER ACCESS: EVAPORATOR FAN MOTOR	EA	1									2	2
X20		D4525-128-2 (60532) COVER CARBIRETOR: FILTER ACCESS	EA	1									2	3
P O	5310-045-3299	D4525-128-1 (60532) WASHER, LOCK: NO. 8 SCREW SIZE	EA	10	*	*	*	*	*	*		*	2	4
X20		MS35338-82 (96906) FRAME FILTER: FRESH AIR	EA	1									2	5
P O	4130-938-0974	B4525-749 (60532) FILTER, FRESH AIR	EA	1	2	2	2	2	2	2	24	100	2	6
P O	5310-011-4986	AL27-88-12-5 (31234) WASHER, FLAT: NO. 8 SCREW SIZE	EA	12	*	*	*	*	*	*		*	2	7
X20		MS27183-7 (96906) SCREEN, CONDENSER	EA	1									2	8
P O	5310-811-3494	C4525-17-1 (60532) NUT, SELF-LOCKING: HEXAGON,	EA	6									2	9
X20		GUARD MTG, NO. 8-32 THD SIZE	EA	1									2	10
X20		MS21044NO8 (96906) GUARD CONDENSER FAN	EA	1									2	11
P O	5310-889-2544	A525-229-1 (60532) BACK PANEL AND MOTOR SUPPORT:	EA	1									2	12
P O	5305-889-3001	E4525-617 (60532) NUT, SELF-LOCKING: HEXAGON,	EA	16									2	13
X20		COVER MTG, NO. 6-32 THD SIZE	EA	16									2	14
X20		MS21045-06 (96906) SCREW, MACHINE: COVER MTG,	EA	4									2	15
P O	5310-06-7325	NO. 6-32 THD SIZE, 1/2 IN. LG	EA	3	*	*	*	*	*	*		*	2	16
X20		M35206-230 (96906) COVER ACCESS: CASING	EA	1									2	17
P O	5305-175-3230	B4525-196-3 (60532) CONTROL ASSEMBLY, DAMPER	EA	1									2	18
X20		B4525-539 (60532) NUT, SELF-LOCKING: HEXAGON,	EA	3	*	*	*	*	*	*		*	2	19
P O	5305-724-6799	1/4-28 THD SIZE MS21045-4 (96906)	EA	3									2	20
X20		WASHER, FLAT: 1/4 IN. ID, .518 IN. OD	EA	1	*	*	*	*	*	*		*	2	21
P O	5305-175-3230	4525-307-24 (60532) BOLT SHOULDER: ARM MTG,	EA	4	*	*	*	*	*	*		*	2	22
X20		1/4-28 THD SIZE, .713 IN. LG	EA	2									2	23
P O	5305-724-6799	NAS1297-4-4 (80205) SCREW, DRIVE: DAMPER CONTROL	EA	2	*	*	*	*	*	*		*	2	24
X20		PLATE MS21318-14 (96906)	EA	2									2	25
P O	5305-724-6799	PLATE INSTRUCTION, DAMPER C4525-208-1 (60532)	EA	2	*	*	*	*	*	*		*	2	26
X20		SETSCREW: KNOB, NO. 10-32 THD SIZE, 3/8 IN. LG, CUP POINT	EA	2									2	27
P O	5305-724-6799	MS51964-51 (96906) KNOB, DAMPER CONTROL	EA	2									2	28
X20		C1525-228-1 (60532)	EA	2									2	29

(1) SMR CODE	(2) FEDERAL STOCK NUMBER	(3) DESCRIPTION USABLE ON CODE	(4) UNIT OF MEAS	(5) QTY INC IN UNIT	(6) 30 DAY DS MAINT ALLOWANCE			(7) 30 DAY GS MAINT ALLOWANCE			(8) 1-YR ALW PER 100 EQUIP CNTGY	(9) DEPOT MAINT ALW PER 100 EQUIP	(10) ILLUS- TRATION	
					(a)	(b)	(c)	(a)	(b)	(c)			(a)	(b)
					1-20	21-50	51-100	1-20	21-50	51-100			FIG. NO.	ITEM NO.
P O	5315-663-2329	PIN, SPRING: WORM, 3/32 IN. DIA, 11/16 IN. LG MS171199 (96906)	EA	1	*	*	*	*	*	*		*	2	22
P O	5310-081-1219	WASHER, FLAT: WORM MTG, 5/16 IN. SCREW SIZE MS27183-12 (96906)	EA	2	*	*	*	*	*	*		*	2	23
X20		WASHER, SPRING: WORM AND GEAR MTG, 5/8 IN. OD, 5/16 IN. ID, .020 IN. THK 3502-18-36S (78189)	EA	3									2	24
X20		ROD LINKAGE D4525-493-2 (60532)	EA	1									2	25
P O	5310-061-7326	NUT, SELF-LOCKING: HEXAGON, GEAR HOUSING, NO. 10-32 THD SIZE MS521045-3 (96906)	EA	4	*	*	*	*	*	*		*	2	26
P O	5310-809-8546	WASHER, FLAT: NO. 10 SCREW SIZE MS27183-8 (96906)	EA	12									2	27
P O	5305-989-7435	SCREW, MACHINE: HOUSING MTG, NO. 10-32 THD SIZE 5/8 IN. LG MS35207-264 (969061)	EA	4	*	*	*	*	*	*		*	2	28
X1		HOUSING, GEAR D4525-579 (60532)	EA	1									2	29
X20		ARM LINKAGE D4525-533-1 (60532)	EA	1									2	30
P O		BOLT SHOULDER: ARM MTG, 1/4-28 THD SIZE, .813 IN. LG NAS1297-4-6 (80205)	EA	1	*	*	*	*	*	*		*	2	31
X20		SPACER: ROD MTG D4525-794-1 (60532)	EA	2									2	32
P O	5305-267-8985	SCREW, CAP, HEXAGON: HOUSING, 1/4-28 THD SIZE, 3 IN. LG MS90726-18 (96906)	EA	1	*	*	*	*	*	*		*	2	33
X20		GEAR AND LEVER ASSEMBLY C4525-535 (60532)	EA	1									2	34
X1		GEAR, WORM D4524-603&1 (60532)	EA	1									2	35
P O	5310-889-2549	NUT, SELF-LOCKING: HEXAGON, DOOR MTG, NO. 8-32 THD SIZE MS21045-08 (96906)	EA	8	*	*	*	*	*	*		*	2	36
X20		DOOR ASSEMBLY: DAMPER B4525-538 (60532)	EA	1									2	37
P O	5305-989-7434	SCREW, MACHINE: COVER MTG, NO. 10-32 THD SIZE, 1/2 IN. LG MS35207-263 (96906)	EA	20	*	*	*	*	*	*		*	2	38
X20		COVER DAMPER DOOR C4525-762-1 (60532)	EA	2									2	39
X20		GRCMMNET: ROD MTG G1152 (79499)	EA	1									2	40
X20		HANDLE, LIFTING B4525-244-1 (60532)	EA	2									2	41
X20		COVER CANVAS: CASING, REAR A4525-261 (60532)	EA	1										
X2F		PLATE IDENTIFICATION, MILITARY C4525-764-1 (60532)	A	EA	1									
X2F		PLATE IDENTIFICATION, MILITARY C4525-763-1 (60532)	B	EA	1									
X20		PLATE, IDENTIFICATION, CHECK TEMPLATE, BRAKE, REAR D4525-141-1 (60532)		EA	1									

(1) SMR CODE	(2) FEDERAL STOCK NUMBER	(3) DESCRIPTION USABLE ON CODE	(4) UNIT OF MEAS	(5) QTY INC IN UNIT	(6) 30 DAY DS MAINT ALLOWANCE			(7) 30 DAY GS MAINT ALLOWANCE			(8) 1-YR ALW PER 100 EQUIP CNTGY	(9) DEPOT MAINT ALW PER 100 EQUIP	(10) ILLUS- TRATION	
					(a)	(b)	(c)	(a)	(b)	(c)			(a)	(b)
					1-20	21-50	51-100	1-20	21-50	51-100			FIG. NO.	ITEM NO.
X20		PLATE, INSTRUCTION, DANGER: FAN GUARD	EA	1										
X20		C4525-209-1 (60532) PLATE INSTRUCTION, CUTOUT	EA	1										
X20		C4525-211-1 (60532) PLATE INSTRUCTION, ELECTRICAL	A EA	1										
X20		C4525-220-1 (60532) PLATE INSTRUCTION, ELECTRICAL	B EA	4										
X20		C525-221-1 (60532) PLATE INSTRUCTION, CHARGE	EA	1										
X20		C4525-76-1 (60532) PLATE INFORMATION, WEIGHT	A EA	1										
X20		C4525-767-1 (60532) PLATE INFORMATION, WEIGHT	B EA	1										
X20		C4525-765-1 (60532)												
P O	5320-932-1972	RIVET, BLIND: CHECK TEMPLATE BRAKE, REAR ACCESS PLATE AD42H (61957)	EA	2	*	*	*	*	*	*		*		
P O	5320-8-2-8388	RIVET, BLIND: PLATE MTG AD43H (61957)	EA	6	*	*	*	*	*	*		*		
X20		WASHER, CUP: PLATE NTG FAN GUARD C45-277-1 (60532)	EA	4										
P O	5310-584-7800	WASHER, FLAT: GROUND MTG, NO. 10 SCREW SIZE MS15795-708 (96906)	EA	3	*	*	*	*	*	*		*	3	18
P O	5310-012-0614	NUT, SELF-LOCKING: HEXAGON, GROUND MTG, NO. 10-32 THD SIZE MS35650-102 (96906)	EA	1	*	*	*	*	*	*		*	3	19
P O	5310-061-7326	NUT, SELF-LOCKING: HEXAGON, GROUND MTG, NO. 10-32 THD SIZE MS21045-3 196906	EA	1	*	*	*	*	*	*		*	3	20
P O	5305-981-6194	SCREW, MACHINE: HARNESS MTG, NO. 6-32 THD SIZE, 1 IN. LG MS35206-234 (96906)	EA	4	*	*	*	*	*	*		*	3	21
P O	5310-889-2544	NUT, SELF-LOCKING: HEXAGON HARNESS MTG, NO. 6-32 TH SIZE MS21045-06 (96906)	EA	4	*	*	*	*	*	*		*	3	22
M O		WIRING, HARNESS: J8, CONTROL PANEL B4525-590 (60532) MANUFACTURE FROM: CONNECTOR RECEPTACLE, ELECTRIC, 1 REQUIRED, P/N FP3106-28-9P (77820) WIRE, ELECTRICAL, NO. 16 AWG, AS REQUIRED, FSN 6145-578-7517											3	23
X20		WIRE, ELECTRICAL, NO. 1 AWG, AS REQUIRED, FSN 6145-578-7516 TERMINAL, LUG, 2 REQUIRED, FSN 590-557-1627 TERMINAL, LUG 12 REQUIRED, FSN 5911-859-4175 SPACER, WIRING HARNESS MTG D4525-792-1 (60532)	EA	2									3	24

(1) SMR CODE	(2) FEDERAL STOCK NUMBER	(3) DESCRIPTION USABLE ON CODE	(4) UNIT OF MEAS	(5) QTY INC IN UNIT	(6) 30 DAY DS MAINT ALLOWANCE			(7) 30 DAY GS MAINT ALLOWANCE			(8) 1-YR ALW PER 100 EQUIP CNTGY	(9) DEPOT MAINT ALW PER 100 EQUIP	(10) ILLUS- TRATION	
					(a)	(b)	(c)	(a)	(b)	(c)			(a)	(b)
					1-20	21-50	51-100	1-20	21-50	51-100			FIG. NO.	ITEM NO.
		GROUP 02 - CONTROL PANEL AND JUNCTION BOX												
P O	5305-043-1942	SCREW, CAP, HEXAGON HEAD: CONTROL PANEL MTG, NO. 10-32 THD SIZE, 1/2 IN. LG	EA	4	*	*	*	*	*	*		*	3	1
X20		CONTROL PANEL	EA	1									3	
X20		A4525-595-1 (60532)	EA	2									3	2
P O	5305-914-6193	KNOB RB175 (86797)	EA	2									3	2
P O	5305-914-6193	SCREW, MACHINE: PLATE AND SWITCH MTG, NO. 8-32 THD SIZE, 1/2 IN. LG	EA	8	*	*	*	*	*	*		*	3	3
P O	5310-88-2549	MS35206-245 (96906)	EA	8	*	*	*	*	*	*		*	3	4
M O		NUT, SELF-LOCKING: HEXAGON, PLATE AND CONTROL MTG, NO. 8-32 THD SIZE	EA	8	*	*	*	*	*	*		*	3	4
		MS21045-08 (96906)											3	5
		LEAD, ELECTRICAL, V14A16												
		A4525-293-68 (60532)												
		MANUFACTURE FROM: WIRE, ELECTRICAL, 16 AWG												
		AS REQUIRED, FSN 6145-578-7517												
		TERMINAL, LUG, 1 REQUIRED, FSN 5940-859-4475												
		TERMINAL, LUG, 1 REQUIRED, FSN 5940-557-1627												
P O	5930-876-1634	CONTROL, TEMPERATURE THERMOSTAT A19AGF9 (92578)	EA	1	*	*	2	*	*	2	8	10	3	6
X20		GROMMET, RUBBER: PLATE	EA	1									3	7
P O	5305-989-7434	MS35490-1 (96906)	EA	1	*	*	*	*	*	*		*	3	8
P O	5310-045-3296	SCREW, MACHINE: CLAWP MTG, NO. 10-32 THD SIZE 1/2 IN. LG	EA	1	*	*	*	*	*	*		*	3	9
X20		MS35207-263 (96906)	EA	4	*	*	*	*	*	*		*	3	9
X20		WASHER, LOCK: NO. 10 SCREW SIZE	EA	4	*	*	*	*	*	*		*	3	9
X20		MS35338-3 (96906)	EA	2									3	10
X20		CLAMP, LOOP: TEMPERATURE CONTROL, BULB MTG	EA	2									3	10
X20		MS21919DG6 (96906)	EA	1									3	
X20		PANEL ASSEMBLY	EA	1									3	
X20		B1525-596 (60532)	EA	1									3	11
P O	5320-932-1972	PLATE C4525-597 (60532)	EA	6	*	*	*	*	*	*		*	3	12
X20		RIVET, BLIND: INSTRUCTION PLATE AD2H (61957)	EA	6	*	*	*	*	*	*		*	3	12
X20		PLATE, INSTRUCTION	EA	1									3	13
X20		C4525-206-1 (60532)	EA	2									3	14
X20		INSULATION: PANEL ASSEMBLY	EA	2									3	14
X20		C4525-58-1 (60532)	EA	1									3	15
P O	5930-907-8948	PANEL A4525-591-1 (60532)	EA	1	*	*	2	*	*	2	6	5	3	16
P O	5305-993-1851	SWITCH, ROTARY 8912K216 (15605)	EA	1	*	*	*	*	*	*		*	3	17
P O	5305-043-1912	SCREW, MACHINE: GROUND MTG, NO. 10-32 THD SIZE. 1 IN. LG	EA	1	*	*	*	*	*	*		*	3	17
		MS35207-267 (96906)												
		SCREW, CAP, HEXAGON HEAD: BOX MTG, NO. 10-32 THD SIZE, 1/2 IN. LG	EA	6	*	*	*	*	*	*		*	4	1

(1) SMR CODE	(2) FEDERAL STOCK NUMBER	(3) DESCRIPTION USABLE ON CODE	(4) UNIT OF MEAS	(5) QTY INC IN UNIT	(6) 30 DAY DS MAINT ALLOWANCE			(7) 30 DAY GS MAINT ALLOWANCE			(8) 1-YR ALW PER 100 EQUIP CNTGY	(9) DEPOT MAINT ALW PER 100 EQUIP	(10) ILLUS- TRATION	
					(a)	(b)	(c)	(a)	(b)	(c)			(a)	(b)
					1-20	21-50	51-100	1-20	21-50	51-100			FIG. NO.	ITEM NO.
P O	5305-018-3878	SCREW, CAP, HEXAGOON HEAD: BOX MTG, NO. 10-32 THD SIZE, 5/8 IN. LG	EA	2	*	*	*	*	*	*	*	4	2	
P O	5310-198-3703	WASHER, FLAT: BOX MTG, NO. 10 SCREW SIZE	EA	2	*	*	*	*	*	*	*	4	3	
X20		JUNCTION BOX ASSEMBLY A4525-500-1 (60532)	EA	1								4	4	
X20		BOX JUNCTION 4525-498 (60532)	EA	1								4	5	
X20		INSERT SCREW THREAD MS35914-108 (96906)	EA	4								4	6	
P O	5320-874-4477	RIVET, BLIND: NUT MTG AK42H (61957)	EA	2	*	*	*	*	*	*	*	4	7	
X20		NUT, SHEET SPRING 12-11-203 (94222)	EA	1								4	8	
X20		PANEL ASSEMBLY: COVER B4525-387-1 (60532)	EA	1								4	9	
P O	5320-932-1972	RIVET, BLIND: DIAGRAM NTG AD42H (61957)	EA	6	*	*	*	*	*	*	*	REF		
X20		PLATE, INSTRUCTION, WIRING DIAGRAM A2301-8958 (60532)	A EA	1								4	8	
X20		PLATE, INSTRUCTION, WIRING DIAGRAM 2301-8959 (60532)	B EA	1								4	8	
X20		SCREW ASSEMBLY: PANEL MTG 12-11-203-12 (92222)	EA	4								4	9	
X20		WASHER RETAINING 12-11014-12 (92222)	EA	4								4	10	
X20		PANEL B4525-38-1 (60532)	EA	1								4	11	
M O		GASKET, RUBBER C4525-1255-17 (60532) MANUFACTURE FROM: ROLL, RUBBER, 1/8 IN. X 1 IN., AS REQUIRED, FSN 9320-935-2036										4	12	
X20		NUT, SHEET SPRING: PANEL MTG C13853-1420 (78553)	EA	4								4	13	
P O	5305-889-3000	SCREW, MACHINE HARNESS MTG, NO. 6-32 THD SIZE, 1/2 IN. LG	EA	8	*	*	*	*	*	*	*	4	14	
P O	5310-889-2544	NUT, SELF-LOCKING HEXAGON, HARNESS AND TRANSFORMER MTG, No. 6-32 THD SIZE	EA	12	*	*	*	*	*	*	*	4	15	
M O		MS21045-06 (96906) WIRING, HARNESS: J13 C2525-352 (60532) MANUFACTURE FROM: CONNECTOR RECEPTACLE, ELECTRIC, 1 REQUIRED, P/N NS3102R211-22PX (96906) TERMINAL, LUG 3 REQUIRED, FSN 5940-557-4316 TERMINAL, LUG, 1 REQUIRED, FSN 5900-557-1631 WIRE, ELECTRICAL, NO. 8 AWG AS REQUIRED, FSN 6145-18-3878										4	16	

(1) SMR CODE	(2) FEDERAL STOCK NUMBER	(3) DESCRIPTION USABLE ON CODE	(4) UNIT OF MEAS	(5) QTY INC IN UNIT	(6) 30 DAY DS MAINT ALLOWANCE			(7) 30 DAY GS MAINT ALLOWANCE			(8) 1-YR ALW PER 100 EQUIP CNTGY	(9) DEPOT MAINT ALW PER 100 EQUIP	(10) ILLUS- TRATION	
					(a)	(b)	(c)	(a)	(b)	(c)			(a)	(b)
					1-20	21-50	51-100	1-20	21-50	51-100			FIG. NO.	ITEM NO.
P O		TRANSFORMER, POWR STEP DOWN 35566 (22694)	EA	1	*	*	2	*	*	2	6	5	4	17
M O		WIRING, HARNESS: J14 B4525-500 (60532) MANUFACTURE FROM: CONNECTOR RECEPTACLE 1 REQUIRED, P/N MS312R28-95 (96906) TERMINAL, LUG. 7 REQUIRED, FSN 59110-26.-8713 TERMINAL, LUG, 4 REQUIRED, FSN 5920-557-1623 WIRE, ELECTRICAL, NO. 16 AWG, AS REQUIRED, FSN 6145-578-7517 WIRE, ELECTRICAL, NO. 14 AWG, AS REQUIRED, FSN 6145-57-7516											4	18
P O		SCREW, MACHINE: HARNESS MTG, NO. 8-32 THD SIZE, 5/8 IN. LG MS35206-245 (96906)	EA	8	*	*	*	*	*	*		*	4	19
P O	5310-285-7083	NUT, SELF-LOCKING: HEXAGON, HARNESS MTG, NO. 8-32 THD SIZE MS21044NO8 (96906)	EA	8	*	*	*	*	*	*		*	4	20
M O		WIRING, HARNESS: J4 A4525-502 (60532) MANUFACTURE FROM: CONNECTOR, RECEPTACLE, 1 REQUIRED, P/N MS3102R36-12S (96906) TERMINAL LUG, 9 REQUIRED, FSN 5940-557-1627 TERMINAL LUG, 3 REQUIRED, FSN 5940-230-0515 TERMINAL LUG,.3 REQUIRED, FSN 590-6441-8713 WIRE, ELECTRICAL, NO. 16 AW, AS REQUIRED, FSN 6125-578-7517 WIRE, ELECTRICAL, NO. 14 AWG, AS REQUIRED, FSN 6145-5787516											4	21
M O		WIRING, HARNESS: J10 B4525-504 (60532) MANUFACTURE FROM: CONNECTOR, RECEPTACLE. 1 REQUIRED, P/N MS3102R36-145X (96906) TERMINAL LUG, 4 REQUIRED, FSN 5940-557-1627 TERMINAL LUG, 2 REQUIRED, FSN 5940-644-8713 TERMINAL LUG, 3 REQUIRED, FSN 5940-204-9142 WIRE, ELECTRICAL, NO. 16 AWG, AS REQUIRED, FSN 6145-578-7517 WIRE, ELECTRICAL, NO. 10 AWG, AS REQUIRED, FSN 6145-578-7513											4	22
P O	5305-984-4988	SCREW, MACHINE: COVER AND CIRCUIT BREAKER MTG, NO. 6-32 THD SIZE, 3/8 IN. LG MS35206-228 (96906)	EA	4	*	*	*	*	*	*		*	5	1

(1) SMR CODE	(2) FEDERAL STOCK NUMBER	(3) DESCRIPTION USABLE ON CODE	(4) UNIT OF MEAS	(5) QTY INC IN UNIT	(6) 30 DAY DS MAINT ALLOWANCE			(7) 30 DAY GS MAINT ALLOWANCE			(8) 1-YR ALW PER 100 EQUIP CNTGY	(9) DEPOT MAINT ALW PER 100 EQUIP	(10) ILLUS- TRATION	
					(a)	(b)	(c)	(a)	(b)	(c)			(a)	(b)
					1-20	21-50	51-100	1-20	21-50	51-100			FIG. NO.	ITEM NO.
X20		COVER, CIRCUIT BREAKER C4525-203 (60532)	EA	1									5	2
P O	5925-465-9743	CIRCUIT BREAKER 71-212-4MG6 (74193)	A EA	1	*	*	2	*	*	2	6	10	5	3
P O		CIRCUIT BREAKER 71-212-5MG6 (74193)	B EA	1	*	*	2	*	*	2	6	10	5	3
X20		PLATE ASSEMBLY BH525-496-1 (60532)	EA	1									5	
P O	5310-889-2549	NUT, SELF-LOCKING: HEXAGON RELAY MTG, NO. 8-32 THD SIZE MS21045--08 (96906)	EA	16	*	*	*	*	*	*		*	5	4
P O		RELAY, SOLENOID: 25 AMP 9565H2B (15605)	EA	3	*	2	2	*	2	2	12	10	5	5
P O	5305-989-6193	SCREW, MACHINE: CONTROL ASSEMBLY MTG, NO. 832 THD SIZE, 1/2 IN. LG MS35206-245 (96906)	EA	4	*	*	*	*	*	*		*	5	6
P O	5310-045-3299	WASHER, LOCK: NO. 8 SCREW SIZE MS35338-42 (96906)	EA	8	*	*	*	*	*	*		*	5	7
P O	5310-011-4986	WASHER, FLAT: NO. 8 SCREW SIZE MS27183-7 (96906)	EA	4	*	*	*	*	*	*		*	5	8
X20		CONTROL ASSEMBLY C4525-408-2 (60532)	EA	1									5	
X20		BRACKET C4525-407 (60532)	EA	1									5	9
P O	5310-197-2298	NUT, SELF-LOCKING: HEXAGON, RELAY MTG, NO. 4-40 THD SIZE MS21044NO4 (96906)	EA	2	*	*	*	*	*	*		*	5	10
P O	5305-993-0190	SCREW, MACHINE: RELAY MTG, NO. 4-40 THD SIZE, 5/16 IN. LG MS35206-214 (96906)	EA	2	*	*	*	*	*	*		*	5	11
X20		RELAY ASSEMBLY, TIME DELAY B4525-3382 (60532)	EA	1									5	
P O	5945-976-3007	RELAY, THERMAL TIME DELAY FR30SNO024 (06151)	EA	1	*	2	2	*	2	2	12	10	5	12
M O		LEAD, ELECTRICAL, RELAY A4525-291-8 (60532) MANUFACTURE FROM: TERMINAL LUG, 3 REQUIRED, FSN 59-557-1627 WIRE, ELECTRICAL, NO. 16 AWG, 35 IN. REQUIRED, FSN 6145-578-7517											5	13
P O	5305-984-6197	SCREW, MACHINE: TERMINAL BOARD MTG, NO. 8-2 THD SIZE, 1 IN. LG MS35206-249 (60532)	EA	4	*	*	*	*	*	*		*	5	14
X20		TERMINAL BOARD 605JJ2502-6 (75382)	EA	1									5	15
P O	5305-958-5451	SCREW, MACHINE: FUSEHDLDER MTG, NO. 6-32 THD SIZE, 5/8 IN. LG MS35190-239 (96906)	EA	4	*	*	*	*	*	*		*	5	16
P O	5310-550-0284	WASHER LOCK: FUSEHOLDER MTG, NO. 6 SCREW SIZE M35336-9 (96906)	EA	4	*	*	*	*	*	*		*	5	17
X20		FUSEHOLDER 2819 (71400)	EA	1									5	18

(1) SMR CODE	(2) FEDERAL STOCK NUMBER	(3) DESCRIPTION USABLE ON CODE	(4) UNIT OF MEAS	(5) QTY INC IN UNIT	(6) 30 DAY DS MAINT ALLOWANCE			(7) 30 DAY GS MAINT ALLOWANCE			(8) 1-YR ALW PER 100 EQUIP CNTGY	(9) DEPOT MAINT ALW PER 100 EQUIP	(10) ILLUS- TRATION	
					(A)	(B)	(C)	(A)	(B)	(C)			(A)	(B)
					1-20	21-50	51-100	1-20	21-50	51-100			FIG. NO.	ITEM NO.
X20		FUSEHOLDER 4515 (71400)	EA	1									5	19
P 0	5920-280-3175	FUSE F09B25OV16-10A (81349)	EA	2	2	2	4	2	2	4	48	40	5	20
P 0	5920-939-5442	FUSE KAW5 (71400)	EA	1	2	2	2	2	2	2	24	30	5	21
P 0	5305-995-3444	SCREW, MACHINE: TERMINAL BOARD MTG, NO. 10-32 THD SIZE, 7/8 IN. LG MS35207-266 (96906)	EA	4	*	*	*	*	*	*		*	5	22
P 0	5310-001-3296	WASHER, LOCK: PLATE AND TERMINAL BOARD MTG, NO. 10 SCREW SIZE MS35338-43 (96906)	EA	10	*	*	*	*	*	*		*	5	23
P 0	5310-809-8546	WASHER, FLAT: TERMINAL BOARD, NO. 10 SCREW SIZE MS27183-8 (96906)	EA	4	*	*	*	*	*	*		*	5	24
X20		TERMINAL BOARD 2200 (75382)	EA	1									5	25
P 0	5945-826-2218	RELAY, SOLENOID: 50 AMP 9565H94 (15605)	EA	1	*	*	2	*		2	6	10	5	26
P 0	5305-989-7434	SCREW, MACHINE: PLATE MTG, NO. 10-32 THD SIZE, 1/2 IN. LG MS35207-263 (96906)	EA	6	*	*	*	*	*	*		*	5	27
X20		PANEL B4525-159 (60532)	EA	1									5	28
P 0	5310-061-7326	NUT, SELF-LOCKING: HEXAGON, GROUND LEAD MTG, NO. 10-32 THD SIZE MS21045-3 (96906)	EA	1	*	*		*	*	*	*	*	5	29
M 0		LEAD, ELECTRICAL, X5C8N: GROUND JUNCTION BOX A4525-293-82 (60532) MANUFACTURE FROM: TERMINAL LUG, 2 REQUIRED FSN 5940-557-4 346 WIRE ELECTRICAL, NO. 8 AWG AS REQUIRED, FSN 6145-18C-3078											5	30
P 0	5305-993-1851	SCREW, MACHINE: GROUND LEAD MTG, NO. 10-32 THD SIZE, 1 IN. LG MS35207-267 (96906)	EA	1	*	*	*	*	*	*	*	*	5	31
X20		FILTER AND RECTIFIER ASSEMBLY B4525-275 (60532)	EA	1									6	
P 0	5310-761-6882	NUT, PLAIN, HEXAGON: RECTIFIER MTG, 1/4-20 THD SIZE M551967-2 (96906)	EA	1	*	*	*	*	*	*	*	*	6	1
P 0	5310-010-3319	WASHER, LOCK: RECTIFIER MTG, 1/4 IN. SCREW SIZE	EA	1	*	*	*	*	*	*	*	*	6	2
P 0	5310-595-5437	WASHER, FLAT: RECTIFIER MTG, 1/4 IN. SCREW SIZE	EA	1	*	*	*	*	*	*	*	*	6	3
P 0	5305-9844988	SCREW, MACHINE: CAP MTG, 6-32 THD SIZE, 3/8 IN. LG MS35206-228 (96906)	EA	4	*	*	*	*	*	*	*	*	6	4
P 0	5310-082-1104	WASHER, FLAT: CAP MTG, NO. 6 SCREW SIZE MS27183-6 (96906)	EA	4	*	*	*	*	*	*	*	*	6	5
X20		CAP, TOP EN C4525-268-1 (60532)	EA	1			*	*	*	*	*	*	6	6

(1) SMR CODE	(2) FEDERAL STOCK NUMBER	(3) DESCRIPTION USABLE ON CODE	(4) UNIT OF MEAS	(5) QTY INC IN UNIT	(6) 30 DAY DS MAINT ALLOWANCE			(7) 30 DAY GS MAINT ALLOWANCE			(8) 1-YR ALW PER 100 EQUIP CNTGY	(9) DEPOT MAINT ALW PER 100 EQUIP	(10) ILLUS- TRATION	
					(a)	(b)	(c)	(a)	(b)	(c)			(a)	(b)
					1-20	21-50	51-100	1-20	21-50	51-100			FIG.	ITEM
X20		GASKET 10-006 (12881)	EA	1									6	7
P 0		RECTIFIER, SEMICONDUCTOR DEVICE SSO257 (5859)	EA	1	*	*	2	*	*	2	6	5	6	8
X20		TUBE ASSEMBLY C4525-270 (60532)	EA	1									6	
P 0		RIVET BLIND AK41H (61957)	EA	8	*	*	*	*	*	*	*		6	9
P 0		NUT, SELF-LOCKING: CAP MTG, NO. 6-32 THD SIZE MS21062-06 (96906)	EA	4	*	*	*	*	*	*	*		6	10
X20		TUBE C4525-266-1 (60532)	EA	1									6	11
P 0	5320-882-8388	RIVET, BLIND: CAP MTG AD43H (61957)	EA	4	*	*	*	*	*	*	*		6	12
X20		CAP, BOTTOM END C4525-269 (60532)	EA	1									6	13
X20		GASLET 10-006 (12881)	EA	1									REF	
P 0		NUT, BLIND RIVET: CAP MTG MS27131-19K (96906)	EA	4	*	*	*	*	*	*	*		6	14
P 0	5310-167-1302	NUT, PLAIN, HEXAGON: FILTER MTG, 7/16-20 THD SIZE AN316-7R (88044)	EA	4	*	*	*	*	*	*	*		6	15
P 0	5310-809-4085	WASHER, FLAT: FILTER MTG, 7/16 IN. SCREW SIZE MS27183-16 (96906)	EA	4	*	*	*	*	*	*	*		6	16
P 0		FILTER, RADIO FREQUENCY INTERFERENCE 5JX100MODIFIED (56289)	EA	4	*	*	2	*	*	2	6	5	6	17
M 0		LEAD, ELECTRICAL: FILTERS A4525-291-75 (60532) MANUFACTURE FROM: TERMINAL LUG. FSN 59-859-41175 TERMINAL LUG, 2 REQUIRED, FSN 5940-534-0970 TERMINAL LUG, 2 REQUIRED, FSN 5940-557-1627	EA	8									6	18
P 0	5305-989-7435	WIRE, ELECTRICAL, NO. 16 AWG, AS REQUIRED, FSN 61),5-578-7517 SCREW, MACHINE: FILTER TO BOX MTG, NO. 10-32 THD SIZE 5/8 IN. LG MS35207-264 (96906)	EA	4	*	*	*	*	*	*	*		6	19
P 0	5310-045-3296	WASHER, LOCK: FILTER TO BOX MTG, NO. 10 SCREW SIZE MS35338-43 (96906)	EA	4	*	*	*	*	*	*	*		6	20
P 0	5310-809-8546	WASHER, FLAT: FILTER TO BOX MTG, NO. 10 SCREW SIZE MS27183-8 (96906)	EA	4	*	*	*	*	*	*	*		6	21
M 0		WIRING, JUNCTION BOX: INDIVIDUAL LEADS MANUFACTURE FROM: TERMINAL LUG, 13 REQUIRED, FSN 5940-20-91 2 TERMINAL LUG, 12 REQUIRED, FSN 591023.0515	EA	30										

(1) SMR CODE	(2) FEDERAL STOCK NUMBER	(3) DESCRIPTION USABLE ON CODE	(4) UNIT OF MEAS	(5) QTY INC IN UNIT	(6) 30 DAY DS MAINT ALLOWANCE			(7) 30 DAY GS MAINT ALLOWANCE			(8) 1-YR ALW PER 100 EQUIP CNTGY	(9) DEPOT MAINT ALW PER 100 EQUIP	(10) ILLUS- TRATION	
					(a)	(b)	(c)	(a)	(b)	(c)			(a)	(b)
					1-20	21-50	51-100	1-20	21-50	51-100			FIG. NO.	ITEM NO.
		TERMINAL LUG, 2 REQUIRED, FSN 5910-534-0970 TERMINAL LUG, 20 REQUIRED, FSN 5940-557-1627 TERMINAL LUG, 9 REQUIRED, FSN 5940-621-8713 TERMINAL LUG. 3 REQUIRED, FSN 5940-660-3634 WIRE, ELECTRICAL, NO. 10 AWG, AS REQUIRED, FSN 6115-578-7513 WIRE, ELECTRICAL, NO. 14 AWG, AS REQUIRED, FSN 6145-578-7516 WIRE ELECTRICAL, NO. 16 AWG, FSN 6145-578-7517 GROUP 03 - COMPRESSOR												
X2F		MOUNT ASSEMBLY: COMPRESSOR C4525-785 (60532)	EA	4									7	
P F	5310-829-9981	NUT, PLAIN, HEXAGON: 5/16-18 THD SIZE MS35649-2312 (96906)	EA	1	*	*	*	*	*	*		*	7	1
X2F		SPACER SPC40 (60532)	EA	1									7	2
P F	5310-322-4529	WASHER, NONMETALLIC WAS127 (60532)	EA	2	*	*	*	*	*	*		*	7	3
P F	5310-595-5523	WASHER, FLAT: ALUMINUM WAS125 (60532)	EA	1	*	*	*	*	*	*		*	7	4
P F		SCREW, SHOULDER: 5/16-18 THD SIZE, 2 IN. LG D4525-78- -1(60532)	EA	1	*	*	*	*	*	*		*	7	5
X2F		COMPRESSOR ASSEMBLY: 60 CYCLE A A2525-709-1 (60532) (COMPONENTS SAME AS COMPRESSOR ASSEMBLY, P/N A4525-709-2, EXCEPT AS SYMBOLIZED)	EA	1									7	
X2F		COMPRESSOR ASSEMBLY: 400 CYCLE B A4525-709-2 (60532)	EA	1									7	
X2F		ELBOW, STREET: 7/8 X 7/8 IN. WE503W2334 (41947)	EA	1									7	6
M F		TUBE, BENT: SUCTION D4525-707-1 (60532) MANUFACTURE FROM: TUBE, COPPER, 7/8 IN. OD, AS REQUIRED, FSN 4710-277-5532	EA	1									7	7
X2F		ELBOW BOTH ENDS 7/8 IN. WE50SC2O34 (41947)	EA	1									7	8
M F		TUBE, BENT: DISCHARGE C4525-708-1 (60532) MANUFACTURE FROM: TUBE, COPPER, 5/8 IN. DOD, AS REQUIRED, FSN 4710-277-5530	EA	1									7	9
X2F		ELBOW : BOTH ENDS 5/8 IN. WE5 O2022 (41947)	EA	1									7	10
P F		COMPRESSOR SUB ASSEMBLY: 60 CYCLE A A1525-70-1 (60532) (COMPONENTS SAME AS COMPRESSOR SUBASSEMBLY, P/N A2525-710-5, EXCEPT AS SYMBOLIZED)	EA	1	*	2	2	*	2	2	12	10	7	

(1) SMR CODE	(2) FEDERAL STOCK NUMBER	(3) DESCRIPTION USABLE ON CODE	(4) UNIT OF MEAS	(5) QTY INC IN UNIT	(6) 30 DAY DS MAINT ALLOWANCE			(7) 30 DAY GS MAINT ALLOWANCE			(8) 1-YR ALW PER 100 EQUIP CNTGY	(9) DEPOT MAINT ALW PER 100 EQUIP	(10) ILLUS- TRATION		
					(a)	(b)	(c)	(a)	(b)	(c)			(a)	(b)	
					1-20	21-50	51-100	1-20	21-50	51-100			FIG. NO.	ITEM NO.	
P F		COMPRESSOR SUB ASSEMBLY: 400 CYCLE	B	EA	1	*	2	2	*	2	2	12	10	7	
X20		A525-7-5 (60532) COVER, CRANKCASE HEATER		EA	1									7	
X20		D4341-1505 (60532) SPRING		EA	1									7	11
X20		SPG58 (60532) COVER		EA	1									7	12
X20		COV351 (60532) INSULATION		EA	1									17	13
P 0	4130-469-6759	INS128 (60532) CRANKCASE HEATER		EA	1	*	*	2	*	*	2	6	5	7	14
X1		C4525-731-4 (60532) COMPRESSOR: 60 CYCLE	A	EA	1									7	15
X1		331-2308-1 (60532) COMPRESSOR: 200 CYCLE	B	EA	1									7	15
P 0	5305-206-0512	B4331-2308-2 (60532) SCREW, MACHINE: RECEPTACLE MTG, NO. 6-32 THD SIZE, 1/2 IN. LG		EA	4	*	*	*	*	*	*			8	1
P 0	5310-005-4007	AN515-6-8 (8804) WASHER, LOCK: COVER AND RECEPTACLE MTG, NO. 6 SCREW SIZE		EA	8	*	*	*	*	*	*			8	2
P 0	5305-591-3320	NS35338&41 (96906) SCREW, MACHINE: LEAD TERMINAL MTG, NO. 10-32 THD SIZE, 5/16 IN. LG		EA	3	*	*	*	*	*	*			8	3
P 0	5310-551-6308	AN520-10-5 (B04) WASHER, LOCK: COVER AND TERMINAL BOARD MTG, NO. 10 SCREW SIZE		EA	5	*	*	*	*	*	*			8	4
M 0		MS353100-3 (96906) RECEPTACLE ASSEMBLY. ELECTRIC: J11 E4525-727 (60532) MANUFACTURE FROM		EA	1									8	5
		CONNECTOR RECEPTACLE, ELECTRIC, 1 REQUIRED, FSN 5935-847-0568 INSULATION, AS REQUIRED, P/N 04525-731-1 (60532)													
		INSULATION, AS REQUIRED, P/N D0525-732-2 (60532) TERMINAL LUG, 3 REQUIRED, FSN 5910-204-9142													
		TERMINAL LUG, 2 REQUIRED, FSN 5940-557-1629 TERMINAL LUG, 4 REQUIRED, FSN 5940-859-4475													
		WIRE, ELECTRICAL, NO. 16 AWG AS REQUIRED, FSN 6145-578-7517													
		WIRE, ELECTRICAL, NO. 10 AWG, AS REQUIRED, FSN 6145-578-7513 WIRE, ELECTRICAL, NO. 18 AWG, AS REQUIRED, FSN 6145-578-7518													
P 0	5305-206-0513	SCREW, MACHINE: COVER MTG, NO. 6-32 THD SIZE, 5/16 IN. LG AN515-6-5 (88044)		EA	4	*	*	*	*	*	*	*		8	6

(1) SMR CODE	(2) FEDERAL STOCK NUMBER	(3) DESCRIPTION USABLE ON CODE	(4) UNIT OF MEAS	(5) QTY INC IN UNIT	(6) 30 DAY DS MAINT ALLOWANCE			(7) 30 DAY GS MAINT ALLOWANCE			(8) 1-YR ALW PER 100 EQUIP CNTGY	(9) DEPOT MAINT ALW PER 100 EQUIP	(10) ILLUS- TRATION	
					(a)	(b)	(c)	(a)	(b)	(c)			(a)	(b)
					1-20	21-50	51-100	1-20	21-50	51-100			FIG. NO.	ITEM NO.
X20		COVER BM525-196-3 (60532)	EA	1									8	7
P 0		SCREW, MACHINE: TERMINAL BOARD MTG, NO. 10-32 THD SIZE, 5/8 IN. LG	EA	2	*	*	*	*	*	*		*	8	8
X20		AN520-10-10 (8804)	EA	1									8	9
X20		TERMINAL BOARD 812-2 (75382)	EA	1									8	10
		GROMMET, RUBBER MS35490-34 (96906)												
		GROUP 04 - PRESSURE CONTROL SWITCHES												
X2F		SWITCH ASSEMBLY, HIGH AND LOW PRESSURE	EA	1										9
P F	5305-889-3000	A4525-532 (60532) SCREW MACHINE: SWITCH ASSEMBLY MTG, NO. 6-32 THD SIZE 1/2 IN. LG	EA	4	*	*	*	*	*	*		*	9	1
P F	5310-197-2298	M535206-230 (96906) NUT, SELF-LOCKING HEXAGON HARNES MTG, NO. 4-40 THD SIZE	EA	*	*	*	*	*	*	*		*	9	2
P F	5305-889-2999	MS21014N04 (96906) SCREW, MACHINE: HARNES TG, NO. -40 THD SIZE, 1/2 IN. LG	EA	*	*	*	*	*	*	*		*	9	3
P F		MS35206-217 (96906) WIRING HARNES: J16	EA	1								*	9	4
		C1525-530 (60532) MANUFACTURE FROM: CONNECTOR RECEPTACLE, ELECTRIC, 1 REQUIRED												
P F		P/N MS3102R1253PY (96906) TERMINAL LUG, 2 REQUIRED FSN 5940557-1627												
P F		WIRE, ELECTRICAL, NO. 16 MTG, AS REQUIRED, FSN 6105-578-7517												
P F		SCREW, MACHINE: SWITCHING: MTG, NO. 6-32 THD SIZE, 5/16 IN. LG	EA	*	*	*	*	*	*	*		*	9	5
P F	5310-045-4007	MS35206-277 (96906) WASHER, LOCK: SWITCH MTG, NO. 6 SCREW SIZE	EA	4	*	*	*	*	*	*		*	9	6
P F		MS3533-17 (96906)												
P F		SWITCH, HIGH PRESSURE 2100A40AN (92578)	EA	1	*	*	2	*	*	2	6	10	9	7
P F	5930-911-9095	SWITCH, LOW PRESSURE 210AP10AN (92578)	EA	1	*	*	2	*	*	2	6	10	9	8
X2F		ENCLOSURE	EA	1									9	9
X2F		B4525-131 (60532)	EA	2									9	10
X2F		GROMMET, RUBBER MS35490 1 (96906)	EA	2									9	10
P F		RIVET, SOLID: NUT MTG AK41H (61957)	EA	8	*	*	*	*	*	*		*	9	11
P F		NUT, SELF-LOCKING: PLATE ENCLOSURE	EA	4	*	*	*	*	*	*		*	9	12
M F		NAS1031A06 (80205) LEAD, ELECTRICAL V8A16, SWITCH TO SWITCH	EA	1										
		A1525-293-69 (60532) MANUFACTURE FROM: TERMINAL LUG, 2 REQUIRED, FSN 5940-557-1627												

(1) SMR CODE	(2) FEDERAL STOCK NUMBER	(3) DESCRIPTION USABLE ON CODE	(4) UNIT OF MEAS	(5) QTY INC IN UNIT	(6) 30 DAY DS MAINT ALLOWANCE			(7) 30 DAY GS MAINT ALLOWANCE			(8) 1-YR ALW PER 100 EQUIP CNTGY	(9) DEPOT MAINT ALW PER 100 EQUIP	(10) ILLUS- TRATION	
					(a)	(b)	(c)	(a)	(b)	(c)			(a)	(b)
					1-20	21-50	51-100	1-20	21-50	51-100			FIG. NO.	ITEM NO.
		WIRE, ELECTRICAL, NO. 16 AWG, AS REQUIRED, FSN 6115-578-7517												
		GROUP 05 - REFRIGERATION COMPONENTS AND CONDENSATE DRAIN												
P F	480-940-8105	VALVE, DIAPHRAGM: CHARGING 5939X4 (58553)	EA	2									10	1
X2F		BUSHING, THREADED: TEE TO VALVE, 1/2 IN X 1/8 IN. WC417A7812 (419 7)	EA	2									10	2
X2F		TEE, TUBE: 2 ENDS 7/8 IN., ID, 1 END 5/8 IN. ID WT600W0011 (41947)	EA	1									10	3
M F		TUBE ASSEMBLY D4525-145 (60532) MANUFACTURE FRONT TUBE, COPPER, 1/4 IN. OD, AS REQUIRED, FSN 4710-203-3171 TUBE, COPPER, 7/8 IN. OD, AS REQUIRED, FSN K710-277-5532	EA	1									10	4
P F	5310-061-7326	ADAPTER, 1 REQUIRED, FSN 4730-289-4221 NUT, SELF-LOCKING HEXAGON CLAMP MTG, NO. 10-32 THD SIZE MS21045-3 (96906)	EA	5		*	*	*	*	*		*	10	5
P F	5305-989-7435	SCREW, MACHINE: CLAMP MTG, NO. 10-32 THD SIZE, 5/8 IN. LG MS35207-264 (96906)	EA	1	*	*	*	*	*		*	*	10	6
X2F		CLAMP, LOOP: TUBE MTG 5/8 IN. LG MS21919DG010 (96906)	EA	2									10	7
X2F		TEE, TUBE: 2 ENDS 5/8 IN. ID, 1 END 3/4 IN. ID VT60W4029 (41947)	EA	1									10	8
M R		TUBE ASSEMBLY CK525-469 (60532) MANUFACTURE FROM: TUBE, COPPER, 1/4 IN. OD, AS REQUIRED, FSN 710-203-3171 TUBE, COPPER, 3/4 IN. OD, AS REQUIRED, FSN A710-554-8692 ADAPTER, 1 REQUIRED, FSN 4730-289-4221	EA	1									10	9
P F		SCREW, MACHINE: CLAMP MTG, NO. 10-32 THD SIZE, 7/8 IN. LG MS35207-210 (96906)	EA	5	*	*	*	*	*	*		*	10	10
X2F		CLAMP, LOOP: TUBE MTG, 3/4 IN. LG MS219190G12 (96906)	EA	1									10	11
X2F		TEE, TUBE: 2 END 3/4 IN. ID, 1 END 5/8 IN. ID WT600W4018 (L1947)	EA	1									10	12
M F		TUBE ASSEMBLY TO CONDENSER MANUFACTURE FROM: TUBE, COPPER, 3/4 IN. OD AS REQUIRED, FSN 4710-554-8692 TUBE, COPPER, 1/4 IN. OD, AS REQUIRED, FSN 4710-203-3171	EA	1									10	13

(1) SMR CODE	(2) FEDERAL STOCK NUMBER	(3) DESCRIPTION USABLE ON CODE	(4) UNIT OF MEAS	(5) QTY INC IN UNIT	(6) 30 DAY DS MAINT ALLOWANCE			(7) 30 DAY GS MAINT ALLOWANCE			(8) 1-YR ALW PER 100 EQUIP CNTGY	(9) DEPOT MAINT ALW PER 100 EQUIP	(10) ILLUS- TRATION	
					(a)	(b)	(c)	(a)	(b)	(c)			(a)	(b)
					1-20	21-50	51-100	1-20	21-50	51-100			FIG. NO.	ITEM NO.
P F		TUBE, BENT D1525-463-1 (60532) MANUFACTURE FROM: TUBE, COPPER, 5/8 IN. OD, AS REQUIRED, FSN 4710-203-3174	EA	1									10	14
P F	5310-809-8546	WASHER, FLAT: NO. 10 SCREW SIZE MS27183-8 (96906)	EA	13	*	*	*	*	*	*		*	10	15
X2F		CLAMP, LOOP: VALVE MTG, 1 1/4 IN. MS21919DG20 (96906)	EA	1									10	16
P F	4120-909-3717	VALVE, PRESSURE REGULATING 237AVIL-70237-142 (81997)	EA	1	*	2	2	*	2	2	12	10	10	17
M F		TUBE: VALVE TO TEE C4525-42-2 (60532) MANUFACTURE FROM: TUBE, COPPER, 5/8 IN. OD, AS REQUIRED, FSN 4710-203-317H	EA	1									10	18
X2F		TEE, TUBE: 1 END 1/2 IN ID, 2 END 5/8 IN. ID WTR600AWOO9 (41947)	EA	2									10	19
P F		TUBE, BENT C4525-435-1 (60532) MANUFACTURE FROM: TUBE, COPPER, 1/2 IN. OD, AS REQUIRED, FSN 4710-203-3173	EA	1									10	20
M F		TUBE, BENT D525-461-1 (60532) MANUFACTURE FROM: TUBE, COPPER, 1/2 IN. OD, AS REQUIRED, FSN 4710203-3173	EA	1									10	21
X2F		TEE, TUBE: ALL ENDS 1/2 IN. ID VR60CO4O00 (41947)	EA	1									10	22
M F		TUBE , BENT C4525-436-1 (60532) MANUFACTURE FROM: TUBE, COPPER, 1/2 IN. OD, AS REQUIRED, FSN 4710-203-3173	EA	1									10	23
M F		TUBE, BENT 64525-460-1 (60532) MANUFACTURE FROM: TUBE, COPPER, 1/2 IN. OD, AS REQUIRED, FSN 4710-203-3173	EA	1									10	24
M F		TUBE, BENT C4525-465-1 (60532) MANUFACTURE FROM, TUBE, COPPER, 5/8 IN. OD, AS REQUIRED, FSN 4710-203-3174	EA	1									10	25
M F		TUBE, BENT D4525-462-1 (60532) MANUFACTURE FROM: TUBE, COPPER, 5/8 IN. OD, AS REQUIRED, FSN 710-203-3174	EA	1									10	26
X2F		TEE, TUBE: 2 ENDS 7/8 IN. ID, 1 END 5/8 IN. ID WT600W4033 (41947)	EA	1									10	27
X2F		GROMMET, RUBBER: TUBE MTG MS35490-22 (96906)	EA	2									10	28

(1) SMR CODE	(2) FEDERAL STOCK NUMBER	(3) DESCRIPTION USABLE ON CODE	(4) UNIT OF MEAS	(5) QTY INC IN UNIT	(6) 30 DAY DS MAINT ALLOWANCE			(7) 30 DAY GS MAINT ALLOWANCE			(8) 1-YR ALW PER 100 EQUIP CNTGY	(9) DEPOT MAINT ALW PER 100 EQUIP	(10) ILLUS- TRATION	
					(a)	(b)	(c)	(a)	(b)	(c)			(a)	(b)
					1-20	21-50	51-100	1-20	21-50	51-100			FIG. NO.	ITEM NO.
X2F		CLAMP, LOOP: TUBE MTG MS21919DG14 (96906)	EA	1									10	29
M F		TUBE D4525-443-1 (60532) MANUFACTURE FROM:	EA	1									10	30
X2F		TUBE, COPPER, 7/8 IN. OD, AS REWIRED, FSN 41710-277-5532	EA	1									10	31
X2F		ELBOW, TUBE/ 7/8 IN. ID, BOTH ENDS AE500W34 (841947)	EA	1									10	32
X2F		BUSHING, FLUSH: FITTING TO COPPER, 3/4 IN. X 5/8 IN. WC101725 ('1917)	EA	1									10	33
M F		CLAMP LOOP: BULB MTG D4525-440-1 (60532) TUBE D4525-440-1 (60532) MANUFACTURE FROM:	EA	1									10	34
P F	5306-722-0393	TUBE COPPER, 3/ IN. OD FSN 4710-554-8692	EA	10	*	*	*	*	*	*		*	10	35
P F	5310-045-3296	SCREW, CAP, HEXAGON HEAD: COIL MTG, NO. 10-32 THD SIZE, 1/2 IN. LG AN3-4A (88044)	EA	10	*	*	*	*	*	*		*	10	36
P2F		WASHER, LOCK: COIL MTG, NO. 10 SCREW SIZE MS35338-3 (96906)	EA	1	*	*	*	*	*	*		*	10	37
X20		EVAPORATOR COIL ASSEMBLY A4525-668 (60532)	EA	2									10	38
X20		CLAMP, HOSE MS358412-11 (96906)	EA	1									10	39
X20		HOSE, DRAIN HOSE45 (60532)	EA	1									10	
X20		TUBE ASSEMBLY, DRAIN: EVAPORATOR CONDENSATE C4525-281 (60532)	EA	1									10	40
P 0	5315-234-1856	TUBE, DRAIN B1525-280 (60532)	EA	1	*	*	*	*	*	*		*	10	41
X20		PIN, COTTER MS24665-155 (96906)	EA	1									10	42
X20		BALL BEARING BAL25 (60532)	EA	1									10	43
P F	5310-061-7326	SPRING, HELICAL COMPRESSION SPG55 (93232)	EA	15	*	*	*	*	*	*		*	11	1
P F	5310-809-856	NUT, SELF-LOCKING HEXAGON, NO. 10-7 THD SIZE MS21045-3 (96906)	EA	20	*	*	*	*	*	*		*	11	2
P 0	5305-989-7435	WASHER, FLAT- NO. 10 SCREW SIZE MS27183-8 (96906)	EA	22	*	*	*	*	*	*		*	11	3
X2F		SCREW, MACHINE: NO. 10-32 THD SIZE, 5/8 IN. LG MS35207-264 (96906)	EA	1									11	4
P F		CLAMP, LOOP: BULB MTG ORE78 (60532) TUBE, BENT D4525-464-1 (60532) MANUFACTURE FROM: TUBE, COPPER, 3/8 IN. OD, AS REQUIRED, FSN 4710-203-3172	EA	1									11	5

(1) SMR CODE	(2) FEDERAL STOCK NUMBER	(3) DESCRIPTION USABLE ON CODE	(4) UNIT OF MEAS	(5) QTY INC IN UNIT	(6) 30 DAY DS MAINT ALLOWANCE			(7) 30 DAY GS MAINT ALLOWANCE			(8) 1-YR ALW PER 100 EQUIP CNTGY	(9) DEPOT MAINT ALW PER 100 EQUIP	(10) ILLUS- TRATION	
					(a)	(b)	(c)	(a)	(b)	(c)			(a)	(b)
					1-20	21-50	51-100	1-20	21-50	51-100			FIG. NO.	ITEM NO.
M F		TUBE BENT D4525-466-1 (60532) MANUFACTURE FROM: TUBE, COPPER, 3/8 IN. OD, AS REQUIRED, FSN 4710-203-3172	EA	1								11	6	
P F	4820-936-3981	VALVE, EXPANSION DT12104 (70255)	EA	1	*	*	2	*	*	2	6	5	11	7
X2F		SPACER C4525-432-9 (60532)	EA	4									11	8
P F	5305-984-6193	SCREW, MACHINE: SOLENOID VALVE MTG, NO. 8-32 THD SIZE, 1/2 IN. LG MS35206-245 (96906)	EA	4	*	*	*	*	*	*		*	11	9
P F	5310-045-3299	WASHER, LOCK: SOLENOID VALVE MTG, NO. 8 SCREW SIZE MS35338-02 (96906)	EA	4	*	*	*	*	*	*		*	11	10
P F	4810-493-2866	VALVE, SOLENOID 08241 (93781)	EA	2	*	2	2	*	2	2	12	20	11	11
X20		NUT OB3-141 (93781)	EA	2									11	12
X20		HOUSING OB3-27 (93781)	EA	2									11	13
X20		SLEEVE 3MP25 (93781)	EA	4									11	14
X20		COIL, 24V, DC 757230 (93781)	EA	2									11	15
P 0	5310-197-2298	NUT, SELF-LOCKING: HEXAGON CONNECTOR MTG, NO. 4-40 THD SIZE MS21044NO4 (96906)	EA	8	*	*	*	*	*	*		*	11	16
P 0	5305-984-4979	SCREW, MACHINE: CONNECTOR MTG, NO. 4-40 THE SIZE, 1 1/4 IN. LG MS35206-222 (96906)	EA	8	*	*	*	*	*	*		*	11	17
X20		CONNECTOR, RECEPTACLE, ELECTRIC MS3102R12S3P (96906)	EA	2									11	18
X20		ADAPTER: CONNECTOR C4525-116 (60532)	EA	2									11	19
M F		TUBE, INLET: RECEIVER C4525-473-1 (60532) MANUFACTURE FROM:	EA	1									11	20
X2F		TUBE, COPPER, 1/2 IN. OD, AS REQUIRED, FSN 4710-203-3173 BUSHING, REDUCER: 1/2 IN. TO 3/8 IN. WC40RW1019 (41947)	EA	1									11	21
M F		TUBE: FROM CONDENSER D4525-845-1 (60532) MANUFACTURE FROM: TUBE, COPPER, 3/8 IN. OD, AS REQUIRED, FSN 4710-203-3172	EA	1									11	22
M F		TUBE ASSEMBLY, OUTLET: RECEIVER C4525-472-1 (60532) MANUFACTURE FROM: TUBE, COPPER, 1/2 IN. OD, AS REQUIRED, FSN 4710-203-3173	EA	1									11	23
X2F		RECEIVER, REFRIGERANT B4525-72 (60532)	EA	1									11	24

(1) SMR CODE	(2) FEDERAL STOCK NUMBER	(3) DESCRIPTION USABLE ON CODE	(4) UNIT OF MEAS	(5) QTY INC IN UNIT	(6) 30 DAY DS MAINT ALLOWANCE			(7) 30 DAY GS MAINT ALLOWANCE			(8) 1-YR ALW PER 100 EQUIP CNTGY	(9) DEPOT MAINT ALW PER 100 EQUIP	(10) ILLUS- TRATION	
					(a)	(b)	(c)	(a)	(b)	(c)			(a)	(b)
					1-20	21-50	51-100	1-20	21-50	51-100			FIG. NO.	ITEM NO.
P F		SCREW, MACHINES CLAMP MTG, 10-32 THD SIZE 7/8 IN. LG MS35207-210 (99006)	EA	4	*	*	*	*	*	*		*	11	25
X2F		CLAMP, LOOP RECEIVER MTG MS 1919DG50 (96906)	EA	2									11	26
X2F		CLAMP, LOOP: TUBE AND TEMPERATURE CONTROL, 8ULB MTG, 3/8 IN MS2919OG6 (96906)	EA	2									11	27
X2F		GROMMET, RUBBER: TUBE MTG, 3/8 IN. MS3NS 90-11 (96906)	EA	2									11	28
M F		TUBE, BENT 64525-178-1 (60532) MANUFACTURE FROM: TUBE, COPPER, 3/8 IN. OD, AS REQUIRED, FSN 4710-203-3172	EA	1									11	29
M F		TUBE, BENT D525-39-1 (60532) MANUFACTURE FROM: TUBE, COPPER, 3/8 IN. OD, AS REQUIRED, FSN 4710-203-3172	EA	1									11	30
X2F		BUSHING, REDUCING: 3/8 IN. X 1/4 IN. WKC4031312 (J19I7)	EA	1									11	31
P F	4820-986-8082	VALVE, CHECK 802E85 (58553)	EA	1	*	*	2	*	*	2	6	10	11	32
M F		TUBE C4525-106-3 (60532) MANUFACTURE FROM: TUBE, COPPER, 1/2 IN. OD, AS REQUIRED, FSN 4710-203-3173	EA	1									11	33
X2F		TEE, TUBE: ALL ENDS 1/2 IN. ID 1WT60OL (41947)	EA	1									11	34
P F	4130-073-8405	VALVE, PRESSURE RELIEF 3001X4-O (58553)	EA	1	*	2	2	*	2	2	12	10	11	35
X2F		ADAPTER: COPPER TO FEMALE PIPE THD, 3/8 IN. X 1/4 IN. WC45W1526 (419 7)	EA	1									11	36
M F		TUBE C4525-106-8 (60532) MANUFACTURE FROM: TUBE, COPPER, 1/2 IN. OD, AS REQUIRED, FSN 41710-203-3173	EA	1									11	37
X2F		ELBOW, TUBE: ALL ENDS 1/2 IN. ID WE500W2022 (41917)	EA	1									11	38
M F		TUBE, BENT 0B525-79-1 (60532) MANUFACTURE FROM: TUBE, COPPER, 1/2 IN. OD, AS REQUIRED, FSN 4710-203-3173	EA	1									11	39
X2F		TEE, TUBE: 2 ENDS 1/2 IN. ID, 1 END 3/8 IN. ID WT60 OOM002 (41947)	EA	2									11	40
M F		TUBE FLARED: OUTLET 01525-418 (60532) MANUFACTURE FROM: TUBE, COPPER, 1/2 IN. OD, AS REQUIRED, FSN 4710-203-3173	EA	1									11	41
		NUT, FLARE. 1 REQUIRED. FSN 4730-585-7318												

(1) SMR CODE	(2) FEDERAL STOCK NUMBER	(3) DESCRIPTION USABLE ON CODE	(4) UNIT OF MEAS	(5) QTY INC IN UNIT	(6) 30 DAY DS MAINT ALLOWANCE			(7) 30 DAY GS MAINT ALLOWANCE			(8) 1-YR ALW PER 100 EQUIP CNTGY	(9) DEPOT MAINT ALW PER 100 EQUIP	(10) ILLUS- TRATION	
					(a)	(b)	(c)	(a)	(b)	(c)			(a)	(b)
					1-20	21-50	51-100	1-20	21-50	51-100			FIG. NO.	ITEM NO.
M F		TUBE, FLARED: INLET D4525-441-1 (60532) MANUFACTURE FROM: TUBE, COPPER, 1/2 IN. OD, AS REQUIRED, FSN 4710-203-3173	EA	1									11	42
X2F		NUT, FLARE. 1 REQUIRED, FSN 1730-585-7318 CLAMP, LOOP: DEHYDRATOR MTG MS21919DG48 (96906)	EA	2									11	43
M F		TUBE, BENT MANUFACTURE FROM: TUBE, COPPER, 3/3 IN. OD, AS REQUIRED, FSN 2710-203-3172	EA	1									11	44
P F		DEHYDRATOR C164 (78262)	EA	1	2	2	2	2	2	2	21	20	11	45
X2F		TANK, ACCUMULATOR B4525-2129 (60532)	EA	1									11	46
M F		TUBE C4525-106-7 (60532) MANUFACTURE FROM:	EA	1									11	47
M F		TUBE, COPPER, 1/2 IN. OD, AS REQUIRED, FSN 4710-203-3173 TUBE, BENT C1525-267-1 (60532) MANUFACTURE FROM:	EA	1									11	48
M F		TUBE, COPPER, 1/2 IN. D00 AS REQUIRED, FSN 4710-203-3173 TUBE ASSEMBLY C4525-46 (60532) MANUFACTURE FROM:	EA	1									11	49
M F		TUBE, COPPER, 1/4 IN. OD, AS REQUIRED, FSN 1710-203-3171 NUT, FLARE 1I REQUIRED, FSN 1730-1C-2737	EA	1									11	50
M F		TUBE, COPPER, 5/8 IN. D0, AS REQUIRED, FSN 4710-203-3172	EA	1									11	51
M F		TUBE, BENT 02525-438-1 (60532) MANUFACTURE FROM:	EA	1									11	52
M F		TUBE, COPPER, 5/8 IN. OD, AS REQUIRED, FSN 4710-203-3174 TUBE, BENT C1525-47-1 (60532) MANUFACTURE FROM:	EA	1									11	53
P F	5310-889-2549	TUBE, COPPER, 1/2 IN. OD, AS REQUIRED, FSN 4710-203-3173 NUT, SELF-LOCKING: HEXAGON, BRACKET MTG, NO. 8-32 THD SIZE MS210158 (96906)	EA	4	*	*	*	*	*	*		*	11	54
P F	5310-011-4986	WASHER FLAT: BRACKET MTG, NO. 8 THD SIZE MS27183-7 (96906)	EA	4	*	*	*	*	*	*		*	11	55
P F	5305-984-6194	SCREW, MACHINE: BRACKET MTG, NO. 8-32 THD SIZE, 5/8 IN. LG MS35206-246 (96906)	EA	4	*	*	*	*	*	*		*	11	55

(1) SMR CODE	(2) FEDERAL STOCK NUMBER	(3) DESCRIPTION USABLE ON CODE	(4) UNIT OF MEAS	(5) QTY INC IN UNIT	(6) 30 DAY DS MAINT ALLOWANCE			(7) 30 DAY GS MAINT ALLOWANCE			(8) 1-YR ALW PER 100 EQUIP CNTGY	(9) DEPOT MAINT ALW PER 100 EQUIP	(10) ILLUS- TRATION		
					(a)	(b)	(c)	(a)	(b)	(c)			(a)	(b)	
					1-20	21-50	51-100	1-20	21-50	51-100			FIG. NO.	ITEM NO.	
X2F	4820-936-3982	BRACKET: LIQUID INDICATOR MTG C4525-787 (60532)	EA	1									11	56	
X2F		GASKET: BRACKET MTG GKT479 (60532)	EA	1										11	57
X2F		SPACER: BRACKET MTG SPC51 (60532)	EA	1										11	58
P F		INDICATOR, LIQUID SAK16 (78462)	EA	1	*	*	2	*	*	2	6	10		11	59
P F		VALVE, EXPANSION TCL300HW120 (70255)	EA	1	*	*	2	*	*	2	6	10		11	60
X2F		BRACKET: EXPANSION VALVE MTG B4525-420 (60532)	EA	1										11	61
X2F		BRACKET: RH, CONDENSER MTG C ,525-170-1 (60532)	EA	1										11	62
X2F		BRACKET: LH, CONDENSER MTG C4525-272,-1 (60532)	EA	1										11	63
P2F		CONDENSER COIL ASSEMBLY A525-682 (60532)	EA	1	*	*	*	*	*	*	5	*		11	64
X2F		BRACKET: EXPANSION AND SOLENOID VALVES B4525-342-1 (60532)	EA	1										11	65
X2F		GROMMET, RUBBER: TUBE MTG, 1/2 IN. MS35190-14 (96906)	EA	1										11	66
X20		CLAMP, LOOP: SUPPORT, EVAPORATOR PAN DRAIN PIPE MS21919DG10 (96906)	EA	1											
X20		PLATE, INSTRUCTIONS SIGHT GLASS PLT199 (60532)	EA	1											
GROUP 06 - HEATER ASSEMBLY															
P 0	5305-989-7413	SCREW, MACHINE: SUPPORT MTG, NO. 10-32 THD SIZE, 1/2 IN. LG MS35207-263 (96906)	EA	4	*	*	*	*	*	*		*	12	1	
X20		HEATING ASSEMBLY A4525-540-1 (60532)	EA	1									12		
X20		CLAMP ASSEMBLY C4525-580-1 (60532)	EA	6									12	2	
X20		SCREW ASSEMBLY 12-11-607-12 (92222)	EA	2									12	3	
X20		WASHER, RETAINING 12-11012-12 (92222)	EA	2									12	4	
X20		CLAMP D5525-245-1 (60532)	EA	1									12	5	
P 0		HEATING ELEMENT 4385-005-01 (71000)	EA	6	*	*	2	*	*	2	6	10	12	6	
P 0	5310-889-2549	NUT, SELF-LOCKING: HEXAGON, SWITCH MTG, NO. 8-32 THD SIZE MS21045-08 (96906)	EA	2	*	*	*	*	*	*		*	12	7	
P 0	5310-011-4986	WASHER FLAT: SWITCH MTG, NO. 8 SCREW SIZE MS27183-7 (96906)	EA	1	*	*	*	*	*	*		*	12	8	
P 0	5305-984-6194	SCREW, MACHINES SWITCH MTG, NO. 8-32 THD SIZE, 5/8 IN. LG MS35206-246 (96906)	EA	2	*	*	*	*	*	*		*	12	9	

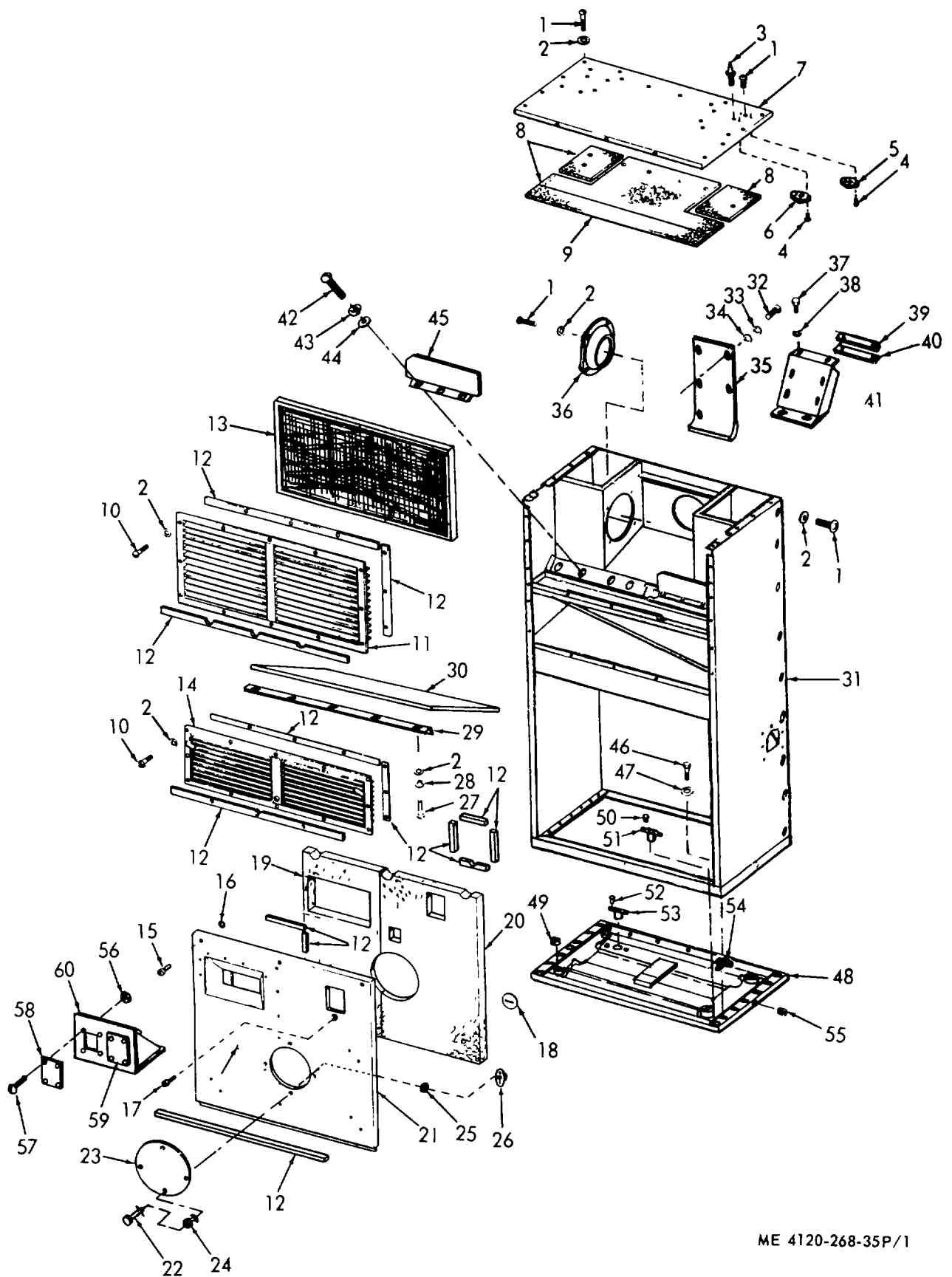
(1) SMR CODE	(2) FEDERAL STOCK NUMBER	(3) DESCRIPTION USABLE ON CODE	(4) UNIT OF MEAS	(5) QTY INC IN UNIT	(6) 30 DAY DS MAINT ALLOWANCE			(7) 30 DAY GS MAINT ALLOWANCE			(8) 1-YR ALW PER 100 EQUIP CNTGY	(9) DEPOT MAINT ALW PER 100 EQUIP	(10) ILLUS- TRATION	
					(a)	(b)	(c)	(a)	(b)	(c)			(a)	(b)
					1-20	21-50	51-100	1-20	21-50	51-100			FIG. NO.	ITEM NO.
X20		SUPPORT, HEATER 8525B-529 (60532)	EA	1									12	10
P 0		SWITCH, THERMOSTATIC HEATER TYPECVA1249 (826475)	EA	1	*	*	2	*	*	2	6	10	12	11
M 0		WIRING, HEATING ASSEMBLY AND THERMOSTATIC SWITCH: INDIVIDUAL LEADS MANUFACTURE FROM: TERMINAL LUG, 5 REQUIRED, FSN 5940-202-9142 TERMINAL LUG, 6 REQUIRED, FSN 5940-644-8713 WIRE, ELECTRICAL, NO. 12 AWG, AS REQUIRED, FSN 6125-578-7521 WIRE, ELECTRICAL, NO. 14 AWG, AS REQUIRED, FSN 6145-578-7516 GROUP 07 - FANS AND MOTORS	EA	6										
P 0	5306-225-8498	SCREW, CAP, HEXAGON HEAD: MOTOR MTG, 5/16-18 THD SIZE, 7/8 IN. LG MS90725-33 (96906)	EA	4	*	*	*	*	*	*		*	13	1
P 0	5310-407-9566	WASHER, LOCK: MOTOR MTG, 5/16 IN. SCREW SIZE MS35338-45 (96906)	EA	4	*	*	*	*	*	*		*	13	2
P 0	5310-081-1219	WASHER, FLAT: MOTOR MTG, 5/16 IN. SCREW SIZE MS27183-12 (96906)	EA	4	*	*	*	*	*	*		*	13	3
X20		SHIM, ADJUSTING: CONDENSER FAN MOTOR, .063 IN. THK C4525-761-3 (60532)	EA	4									13	4
X20		SHIM, ADJUSTING: CONDENSER FAN MOTOR, .032 IN. THK C2525-761-4 (60532)	EA	4									13	5
P20		FAN ASSEMBLY, CONDENSER FAN297 (60532)	EA	1	*	*	*	*	*	*	2	*	13	6
X20		SCREW, SET 5CR325 (60532)	EA	2									13	7
X20		KEY, MACHINE MS20066-147 (96906)	EA	1									13	8
P 0	6105-401-4616	MOTOR CONDENSER FAN: 60 CYCLE 7015-4 (64731) (COMPONENTS SAME AS MOTOR, CONDENSER FAN, P/N 7025-6 (64731) EXCEPT AS SYMBOLIZED) (ELECTRIC MOTORS AND REPAIR PARTS ARE TO BE REQUISITIONED BY COMPLETE IDENTIFYING NOMENCLATURE, COMPLETE MOTOR AND NAMEPLATE DATA MUST BE SHOWN ON REQUISITION TO INSURE PROPER SUPPLY OF PARTS OR MOTOR)	EA	1	*	2	2	*	2	2	12	10	13	
P 0		MOTOR, CONDENSER FAN: 400 CYCLE 7025-6 (6:731) (ELECTRIC MOTORS AND REPAIR PARTS ARE TO BE REQUISITIONED BY COMPLETE IDENTIFYING NOMENCLATURE, COMPLETE MOTOR AND NAMEPLATE DATA MUST BE SHOWN ON REQUISITION TO INSURE PROPER SUPPLY OF PARTS OR MOTOR)	EA	1	*	2	2	*	2	2	12	10	13	
P 0	5305-012-0612	SCREW, MACHINE: BELL MTG, NO. 10-32 THD SIZE, 5/8 IN. LG MS352242-73 (96906)	EA	8	*	*		*	*	*	*		*13	9

(1) SMR CODE	(2) FEDERAL STOCK NUMBER	(3) DESCRIPTION USABLE ON CODE	(4) UNIT OF MEAS	(5) QTY INC IN UNIT	(6) 30 DAY DS MAINT ALLOWANCE			(7) 30 DAY GS MAINT ALLOWANCE			(8) 1-YR ALW PER 100 EQUIP CNTGY	(9) DEPOT MAINT ALW PER 100 EQUIP	(10) ILLUS- TRATION	
					(a)	(b)	(c)	(a)	(b)	(c)			(a)	(b)
					1-20	21-50	51-100	1-20	21-50	51-100			FIG. NO.	ITEM NO.
X20		END BELL, FRONT 02-009922-000 (64731)	EA	1									13	10
X20		END BELL, REAR 02-00923-000 (61731)	EA	1									13	11
X20		BEARING, BALL, FRONT 01-00520 85 (60731)	EA	1									13	12
X20		ROTOR AND SHAFT 02-10794-002 (61731)	A	EA	1								13	13
X20		ROTOR AND SHAFT 02-010795--002 (611731)	B	EA	1								13	13
X20		BEARING. BALL REAR 01-00506 (64731)	EA	1									13	14
X20		FRAME AND STATOR 02-10793-001 (61731)	A	EA	1								13	15
X20		FRAME AND STATOR 02-010795-001 (61731)	B	EA	1								13	15
P 0	5305-206-8156	SCREW, MACHINE: BOX MTG, NO. 8-32 THD SIZE, 2 IN. LG	EA	4	*	*	*	*	*	*		*	13	16
X20		BOX, CONNECTOR 9242P (61731)	EA	1									13	17
P 0	5305-013-2636	SCREW, MACHINE: CONNECTOR MTG, NO. 140 THD SIZE, 3/8 IN. LG	EA	4	*	*	*	*	*	*		*	13	18
X20		CONNECTOR, PLUG, ELECTRIC MS3102R16-10P (96906)	EA	1									13	19
P 0	5305-889-2999	SCREW, MACHINE: PROTECTOR MTG, NO. 4-40 THD SIZE, 1/2 IN. LG	EA	2		*	*	*	*	*		*	13	20
X20		PROTECTOR, THERMAL OVERLOAD HH330 (82066)	A	EA	1								13	21
X20		PROTECTOR, THERMAL OVERLOAD BH20AD (82616)	B	EA	1								13	21
P 0	5306-225-8496	SCREW CAP, HEXAGON: MOTOR MTG, 5/16-18 THD SIZE, 5/8 IN. LG	EA	4	*	*	*	*	*	*		*	14	1
P 0		WASHER, FLAT: MOTOR MTG, 5/16 IN. SCREW SIZE	EA	4									14	2
P 0	5310-040-9566	WASHER, LOCK: MOTOR MTG, 5/16 IN. SCREW SIZE	EA	4	*	*	*	*	*	*		*	14	3
X20		FAN AND MOTOR ASSEMBLY, EVAPORATOR: 60 CYCLE B4525-368-1 (60532)	A	EA	1								14	
X20		(COMPONENTS SAME AS FAN AND MOTOR ASSEMBLY, P/N B)525-368-2, EXCEPT AS SYMBOLIZED)	B	EA	1								14	
P 0	5305-206-3466	FAN AND MOTOR ASSEMBLY, EVAPORATOR: 400 CYCLE B4525-368-2 (60532)	EA	4	*	*	*	*	*	*		*	14	4
P20	4130-981-6616	SETScrew: FANS, SOCKET HEAD, 31-20 THD SIZE, 3/31 IN. LG D523-2058 (60532)	EA	1	*	*	2	*	*	2	8	10	14	5
P20		FAN: RH, EVAPORATOR FAN183 (60532)	EA	1	*	*	*	*	*	*	5	*	14	6
P20		FAN: LH, EVAPORATOR FAN296 (60532)	EA	1	*	*	*	*	*	*		*	14	6

(1) SMR CODE	(2) FEDERAL STOCK NUMBER	(3) DESCRIPTION USABLE ON CODE	(4) UNIT OF MEAS	(5) QTY INC IN UNIT	(6) 30 DAY DS MAINT ALLOWANCE			(7) 30 DAY GS MAINT ALLOWANCE			(8) 1-YR ALW PER 100 EQUIP CNTGY	(9) DEPOT MAINT ALW PER 100 EQUIP	(10) ILLUS- TRATION		
					(a)	(b)	(c)	(a)	(b)	(c)			(a)	(b)	
					1-20	21-50	51-100	1-20	21-50	51-100			FIG. NO.	ITEM NO.	
X20		KEY, MACHINE MS20066 146 (96906)	EA	2									14	7	
P 0	6105-253-5519	MOTOR, EVAPORATOR FAN: 60 CYCLE 926303 (6)1731 (ELECTRIC MOTORS AND REPAIR PARTS ARE TO BE REQUISITIONED BY COMPLETE IDENTIFYING NOMENCLATURE, COMPLETE MOTOR AND NAMEPLATE DATA MUST BE SHOWN ON REQUISITION TO INSURE PROPER SUPPLY OF PARTS OR MOTOR)	A	EA	1	*	2	2	*	2	2	12	10	14	
P 0	6105-253-5520	MOTOR, EVAPORATOR FAN: 400 CYCLE B K715-22 (61731) (ELECTRIC MOTORS AND REPAIR PARTS ARE TO BE REQUISITIONED BY COMPLETE IDENTIFYING NOMENCLATURE, COMPLETE MOTOR AND NAMEPLATE DATA MUST BE SHOWN ON REQUISITION TO INSURE PROPER SUPPLY OF PARTS OR MOTOR)	B	EA	1	*	2	2	*	2	2	12	10	14	
P 0		SCREW, MACHINE: BELL MTG, NO. 10-32 THD SIZE, 3/4 IN. LG MS35224-65 (96906)		EA	8	*	*	*	*	*	*		*	14	8
X20		END, BELL 02-009312-000 (61731)		EA	2									14	9
X20		BEARING BALL 01-005248-084 (61731)		EA	2									14	10
X20		ROTOR AND SHAFT 02-010391-009 (6)731)	A	EA	1									14	11
X20		ROTOR AND SHAFT 02-O1809-002 (6)731)	B	EA	1									14	11
X20		FRAME AND STATOR 02-009486-1 (61731)	A	EA	1									14	12
X20		FRAME AND STATOR 02-010809-1 (64731)	B	EA	1									14	12
P 0	5305-206-8156	SCREW, MACHINE: BOX MTG, NO. 8-32 THD SIZE, 2 IN. LG BOX, CONNECTOR 9315P ,(6K731)		EA	4	*	*	*	*	*	*		*	14	13
X20		SCREW, MACHINE: CONNECTOR MTG, NO. 4-40 THD SIZE, 3/8 IN. LG CONNECTOR, PLUG, ELECTRIC MS3P02R 14S7P (96906)		EA	4	*	*	*	*	*	*		*	14	15
P 0	5305-013-2636	SCREW, MACHINE: PROTECTOR MTG, NO. 4-40 THD SIZE. 1/2 IN. LG MS35206-217 (96906)		EA	2	*	*	*	*	*	*		*	14	17
X20		PROTECTOR, THERMAL OVERLOAD MWH39A0 (82616)	A	EA	1									14	18
X20		PROTECTOR, THERMAL OVERLOAD MWJ33A0 (82646)	B	EA	1									14	18
M 0		GROUP 08 - WIRING HARNESSSES WIRING HARNESS, P14 AND J12: FROM JUNCTION BOX TO P12 E)525-613 (60532) MANUFACTURE FROM: CONNECTOR, PLUG, ELECTRIC: P14 HARNESS. 1 REQUIRED, P/N MS3106R28-9PW (96906)		EA	1										

(1) SMR CODE	(2) FEDERAL STOCK NUMBER	(3) DESCRIPTION USABLE ON CODE	(4) UNIT OF MEAS	(5) QTY INC IN UNIT	(6) 30 DAY DS MAINT ALLOWANCE			(7) 30 DAY GS MAINT ALLOWANCE			(8) 1-YR ALW PER 100 EQUIP CNTGY	(9) DEPOT MAINT ALW PER 100 EQUIP	(10) ILLUS- TRATION	
					(a)	(b)	(c)	(a)	(b)	(c)			(a)	(b)
					1-20	21-50	51-100	1-20	21-50	51-100			FIG. NO.	ITEM NO.
M O		CONNECTOR, RECEPTACLE, ELECTRIC: J12 HARNESS, AS REQUIRED, P/N NS31OOR28-95Z (96906) WIRE, ELECTRICAL, 16 AWG AS REQUIRED, FSN 6145-578-7517 WIRE, ELECTRICAL, 14 AWG AS REQUIRED, FSN 6145-578-7516 WIRING HARNESS: P5, P10, P11 AND P16 FROM JUNCTION BOX TO COMPRESSOR, PRESSURE SWITCH AND SOLENOID VALVE B4525-612 (60532) MANUFACTURE FROM: CONNECTOR, PLUG, ELECTRIC: P5 HARNESS. 1 REQUIRED, FSN 5935-725-4638 CONNECTOR, PLUG, ELECTRIC: P16 HARNESS, 1 REQUIRED, P/N S3106R12535Y (96906) CONNECTOR, PLUG, ELECTRIC: P11 HARNESS 1 REQUIRED, FSN 5935-878-7588 CONNECTOR, PLUG, ELECTRIC: P10 HARNESS 1 REQUIRED P/N MS310R36-1IPX (96906) WIRE, ELECTRICAL, NO. 16 AG, AS REQUIRED, FSN 6145-578-7517	EA	1										
M O		WIRE, ELECTRICAL, NO. 10 AWG AS REQUIRED, FSN 6115-578-7513 WIRING HARNESS: P6, P12 AND J7 FROM J12 TO SOLENOID VALVE AND P7 B4525-614 (60532) MANUFACTURE FROM: CONNECTOR, PLUG, ELECTRIC: P6 HARNESS, 1 REQUIRED, FSN 5935-725-638 CONNECTOR, PLUG, ELECTRIC: P12 HARNESS, 1 REQUIRED P/N MS3106R28-9PZ (96906) CONNECTOR, RECEPTACLE, ELECTRIC: J7 HARNESS, 1 REQUIRED, P/N MS31OO8-9SX (96906) WIRE, ELECTRICAL, NO. 16 AWG, AS REQUIRED, FSN 6145-578-7517 WIRE, ELECTRICAL, NO. 14 AWG AS REQUIRED, FSN 615-578-7516 WIRING HARNESS: J1 AND P13, POWER INPUT B4525-615 (60532) MANUFACTURE FROM: CONNECTOR, PLUG, ELECTRIC: P13, 1 REQUIRED, P/N MS316R24-22SX (96906) CONNECTOR, RECEPTACLE, ELECTRIC: J1, 1 REQUIRED, P/N MS31ODR24-22P (96906) WIRE, ELECTRICAL, NO. 8 AWG, AS REQUIRED, FSN 6145-578-7515	EA	1										
M O			EA	1										

(1) SMR CODE	(2) FEDERAL STOCK NUMBER	(3) DESCRIPTION USABLE ON CODE	(4) UNIT OF MEAS	(5) QTY INC IN UNIT	(6) 30 DAY DS MAINT ALLOWANCE			(7) 30 DAY GS MAINT ALLOWANCE			(8) 1-YR ALW PER 100 EQUIP CNTGY	(9) DEPOT MAINT ALW PER 100 EQUIP	(10) ILLUS- TRATION	
					(a)	(b)	(c)	(a)	(b)	(c)			(a)	(b)
					1-20	21-50	51-100	1-20	21-50	51-100			FIG. NO.	ITEM NO.
M O		WIRING HARNESS: P2, PK AND P8, FROM CONTROL PANEL TO JUNCTION BOX AND CONDENSER FAN MOTOR B6525-616 (60532) MANUFACTURE FROM: CONNECTOR, PLUG, ELECTRIC: P8 HARNESS, 1 REQUIRED, FSN 5935-&6-3956 CONNECTOR, PLUG, ELECTRIC: P2 HARNESS, 1 REQUIRED, FSN 5935-755-3493 CONNECTOR, PLUG, ELECTRIC: P4 HARNESS, 1 REQUIRED, P/N MS3106R36-14P (96906) WIRE, ELECTRICAL, NO. 16 AWG, AS REQUIRED, FSN 61K5-578-7517 WIRE, ELECTRICAL, NO. 14 AWG, AS REQUIRED, FSN 6145-578-7516	EA	1										
M O		WIRING HARNESS: P3 AND P7 FROM J7 TO HEATER AND EVAPORATOR FAN MOTOR B4525-539 (60532) MANUFACTURE FROM: CONNECTOR, PLUG, ELECTRIC: P3, 1 REQUIRED, FSN 5935-805-4991 CONNECTOR, PLUG, ELECTRIC: P7, 1 REQUIRED, P/ N3106M28-9PX (96906) TERMINAL LUG, 6 REQUIRED, FSN 5910-644-8713 WIRE, ELECTRICAL, NO. 14 AWG. AS REQUIRED, FSN 6145-578-7516 WIRE, ELECTRICAL, NO. 16 AWG, AS REQUIRED, FSN 6145-578-7517	EA	1										
C	5935-816-8614	CONNECTOR, PLUG, ELECTRICAL: P1, POWER INPUT MS3106R24-225 (96906)	EA	1										
X20		CAP, DUST: INPUT POWER CONNECTOR, P1 NS25013-246 (96O906)	EA	1										
M O		INSULATION SLEEVING, ELECTRIC FIT221-3-16 (921621) MANUFACTURE FROM: INSULATION SLEEVING, 3/16 IN. ID, AS REQUIRED, FSN 5970-082-3942	EA	1										
M O		INSULATION SLEEVING, ELECTRIC F IT221-1-8 (921641) MANUFACTURE FROM: INSULATION SLEEVING, 1/8 IN. ID, AS REQUIRED, FSN 5970-990-9912	EA	3										
X20		CLAMP, LOOP: WIRING HARNESS MTG, HEATER MS21919DDG8 (96906)	EA	1										



ME 4120-268-35P/1

FIGURE 1. CASING, PANELS, GRILLES AND MIST ELIMINATOR

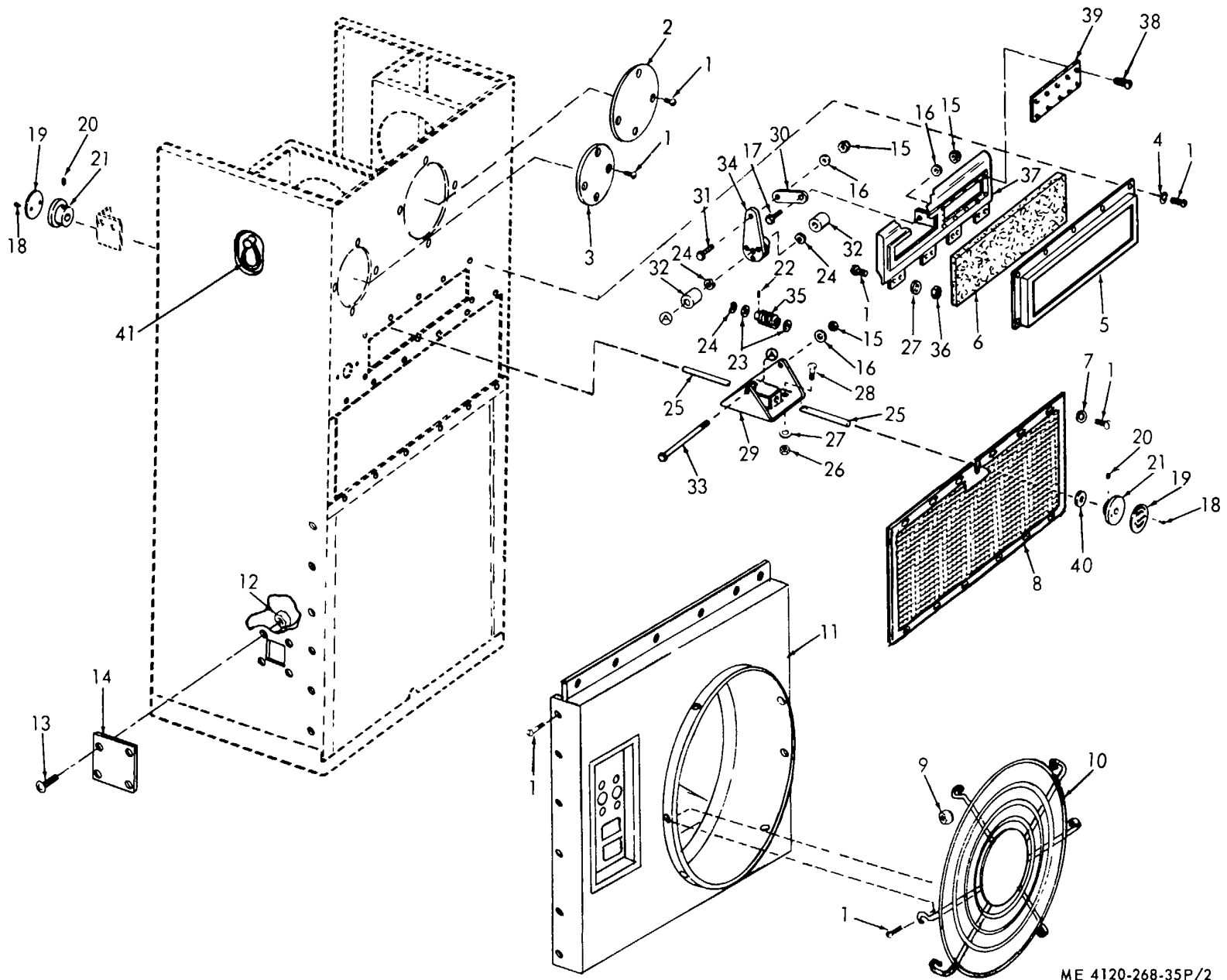


FIGURE 2. DAMPER CONTROL, FILTER, GRILLE, PANEL AND GUARD

ME 4120-268-35P/2

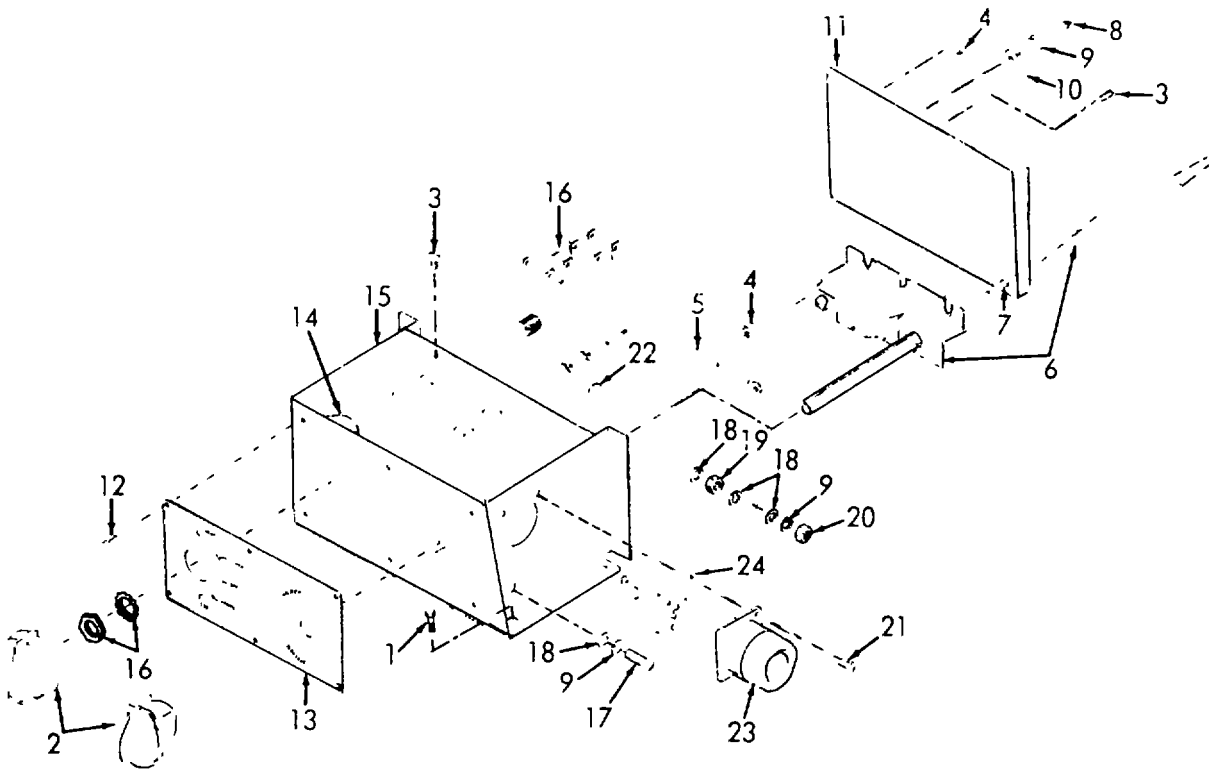
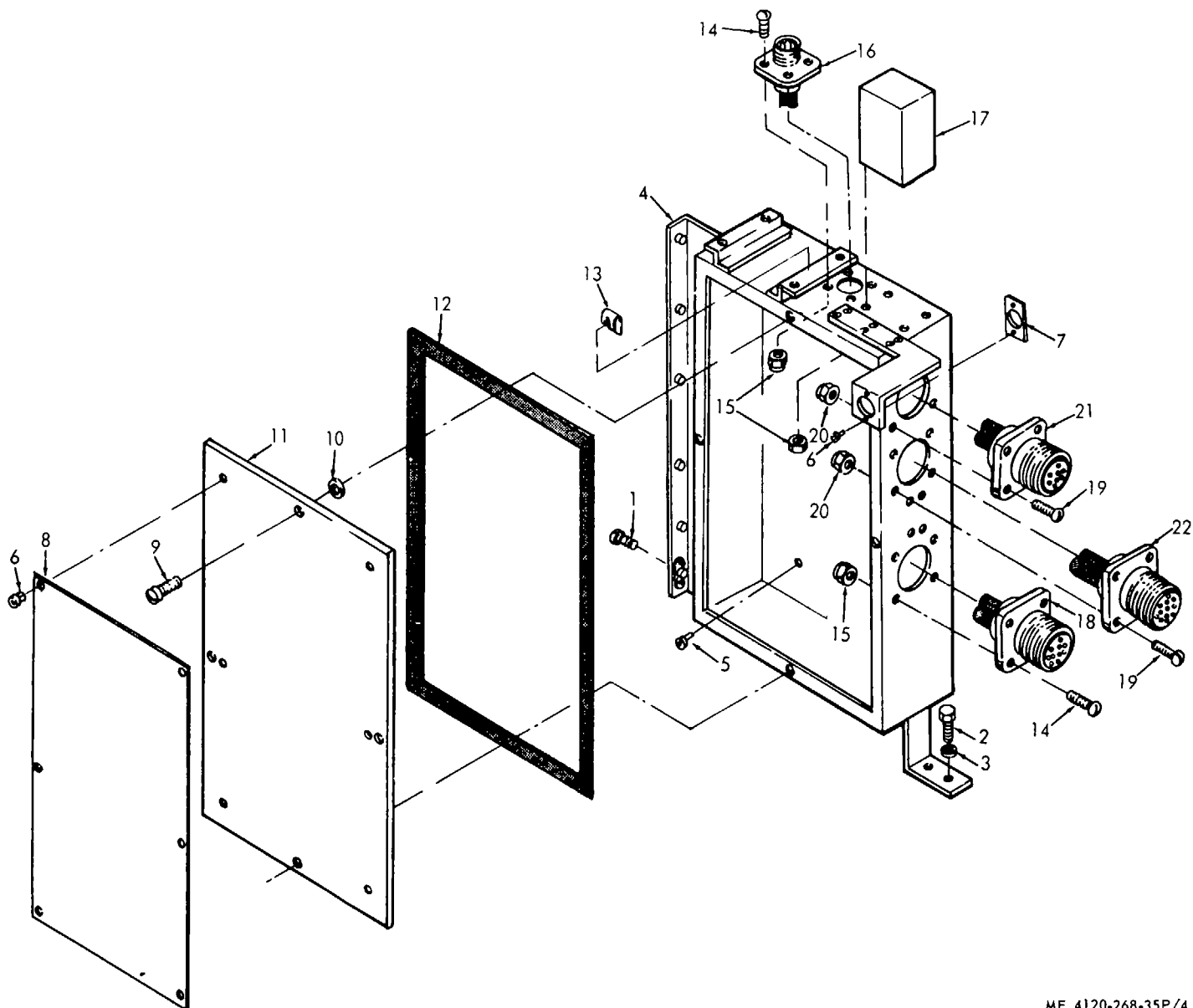


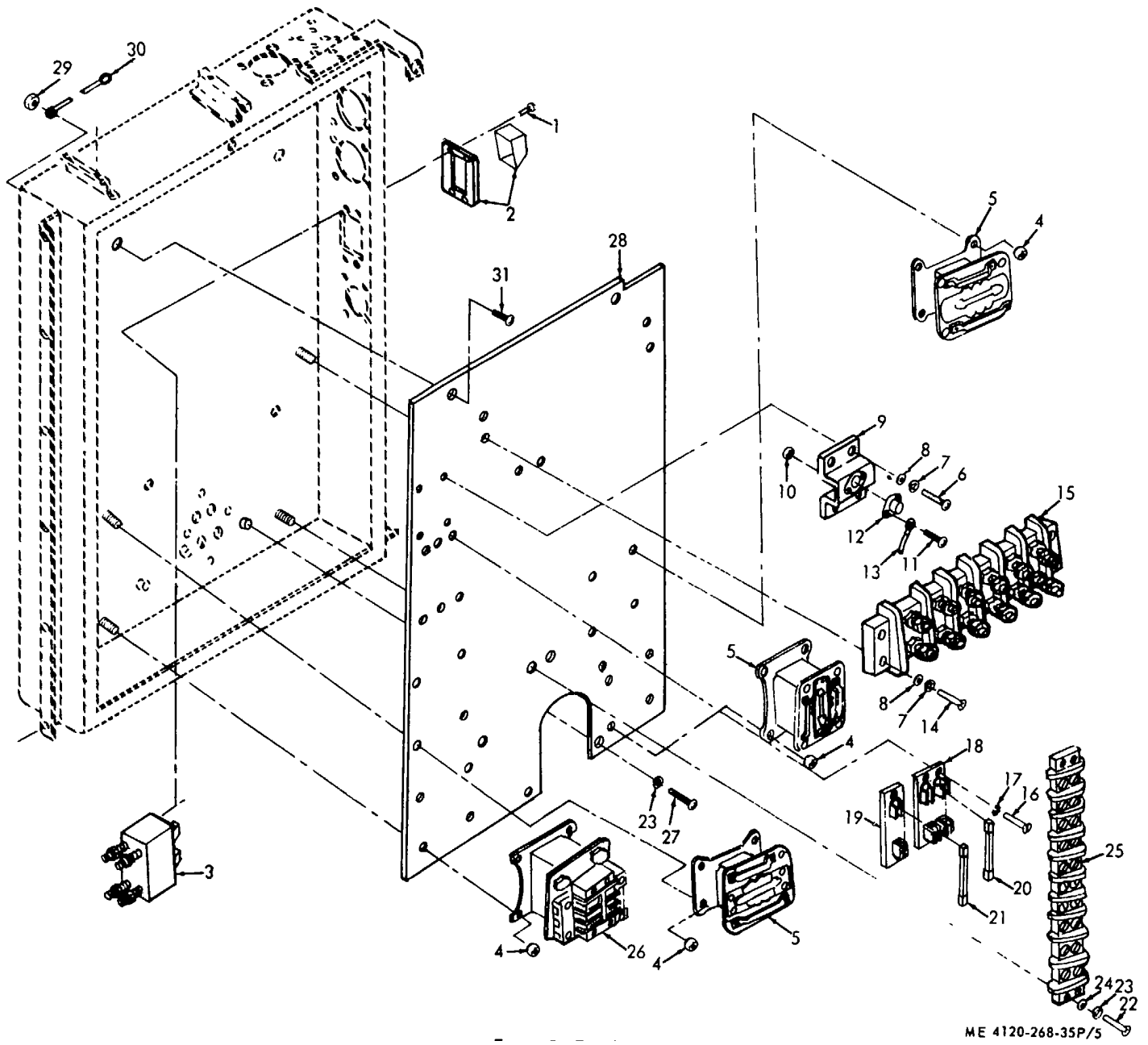
FIGURE 3. CONTROL PANEL

ME 4120-268-35P/3



ME 4120-268-35P/4

Figure 4. Junction Box, Transformer and Wiring Harnesses



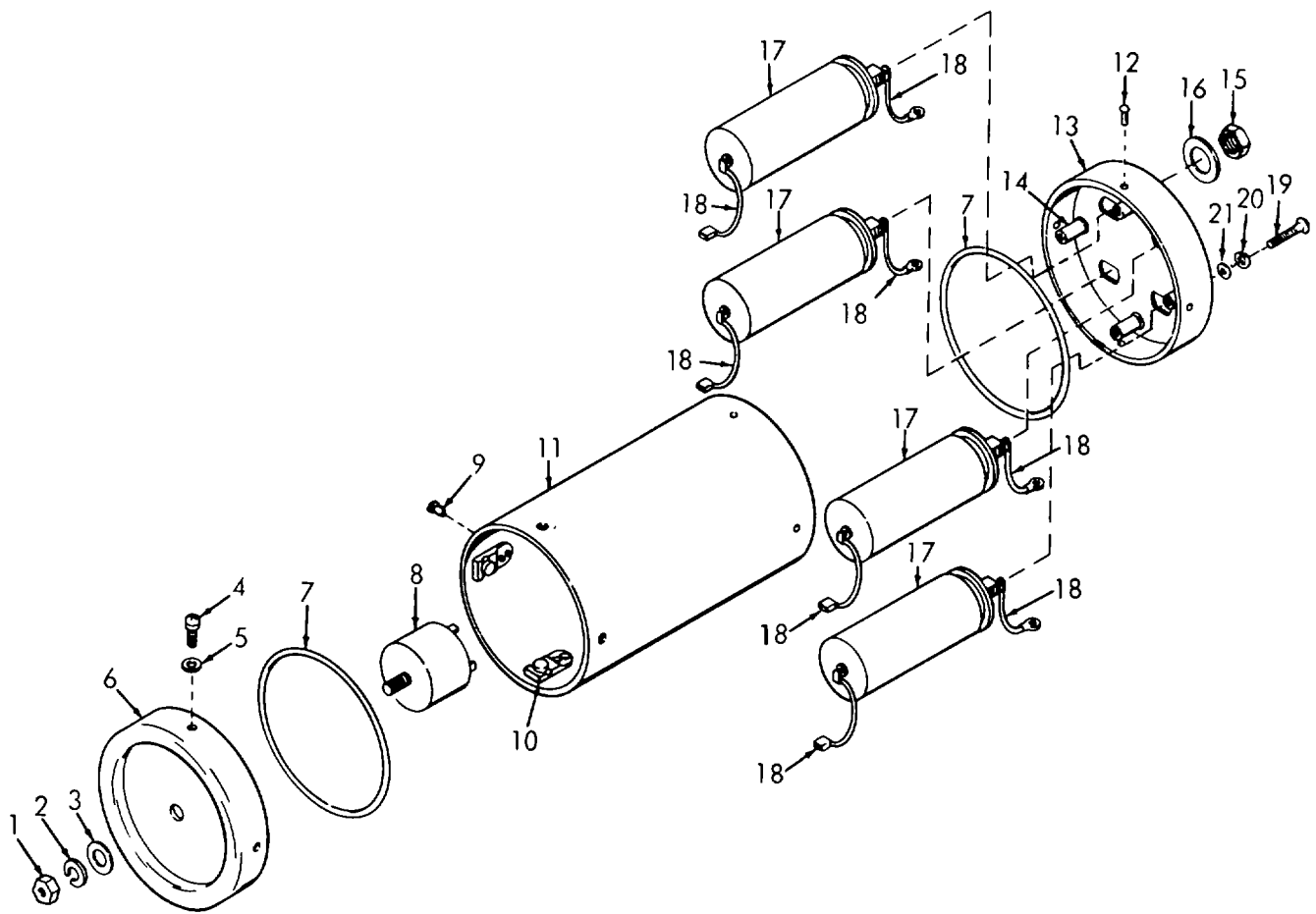
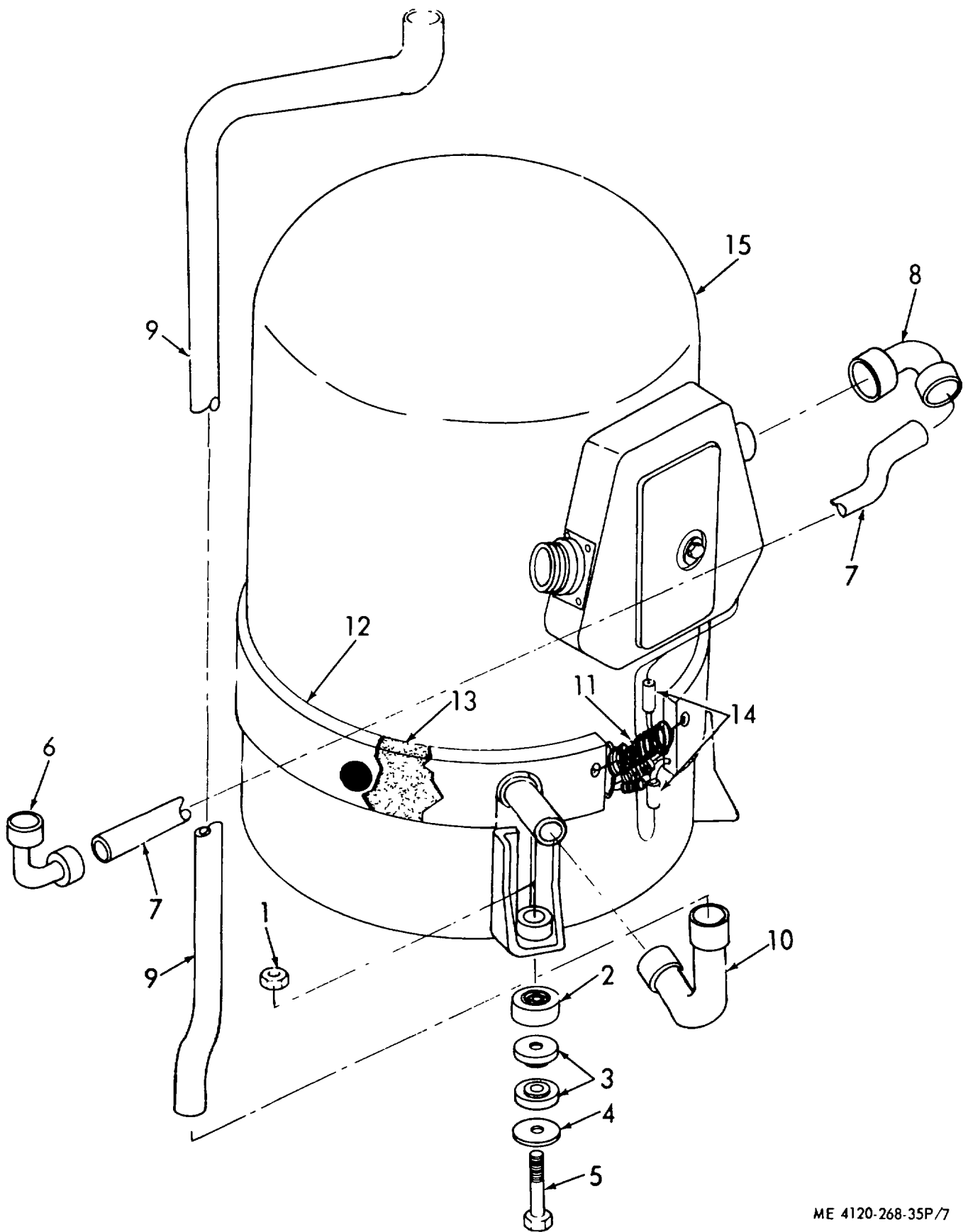


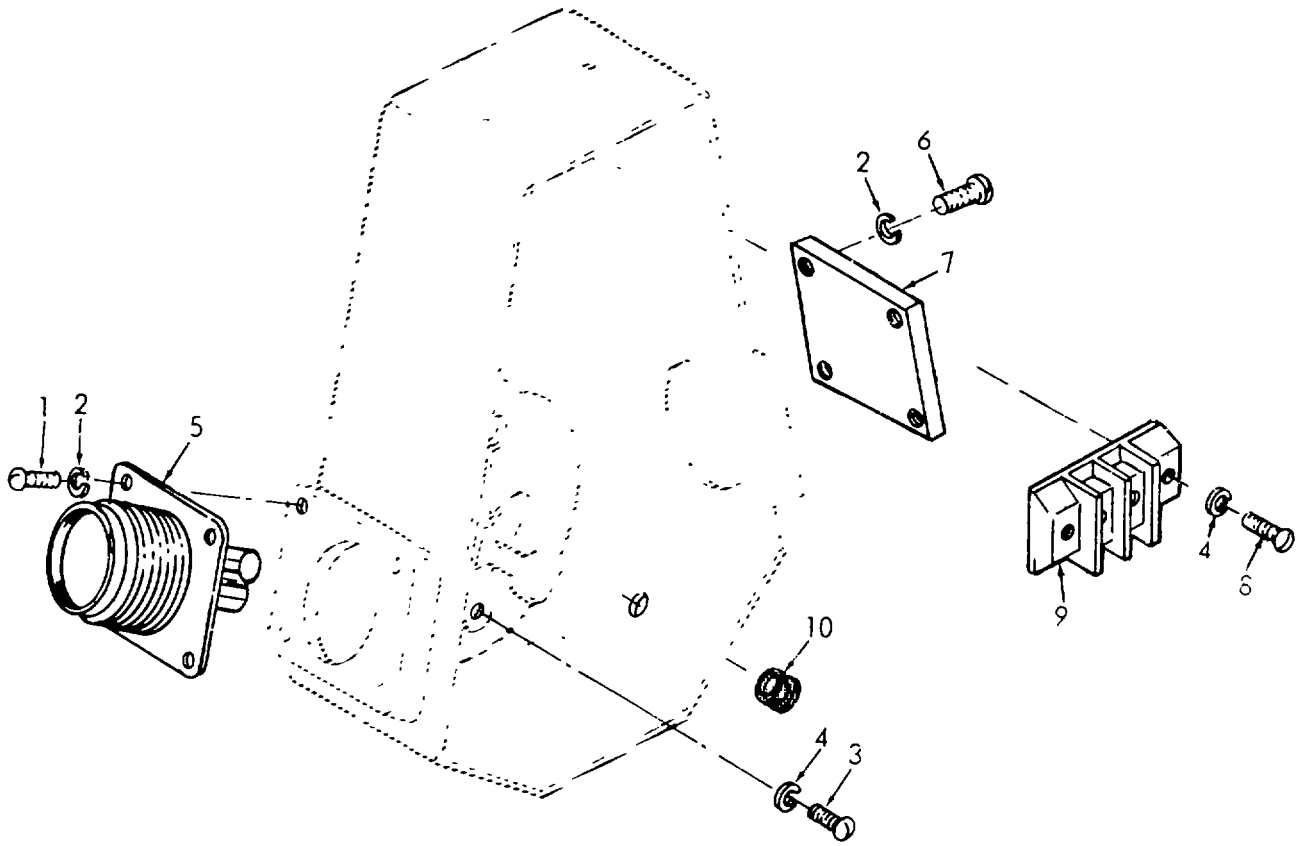
Figure 6. Filter

ME 4120-268-35P/6



ME 4120-268-35P/7

Figure 7. Compressor



ME 4120-268-35P, 8

Figure 8. Compressor Electrical Components

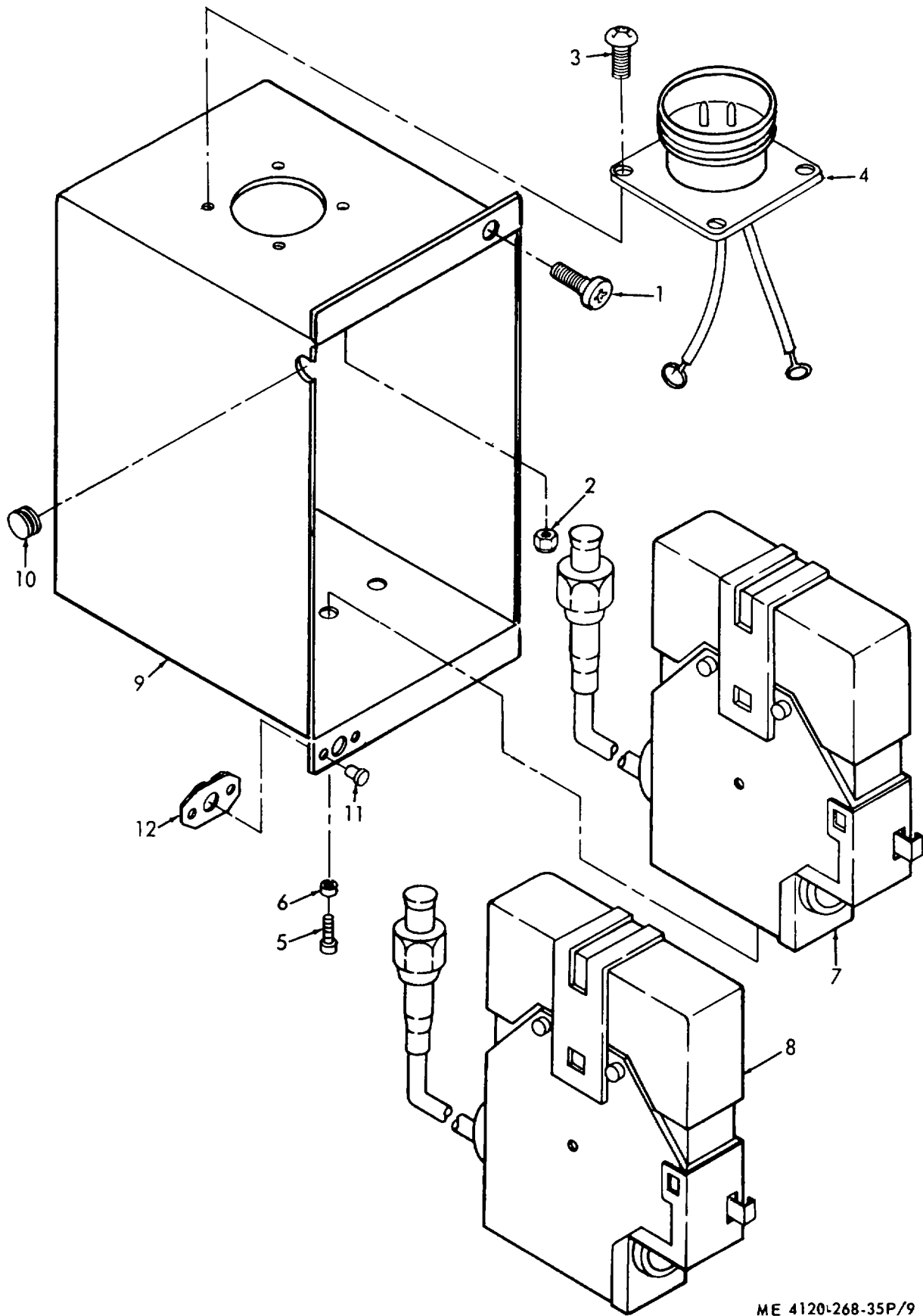
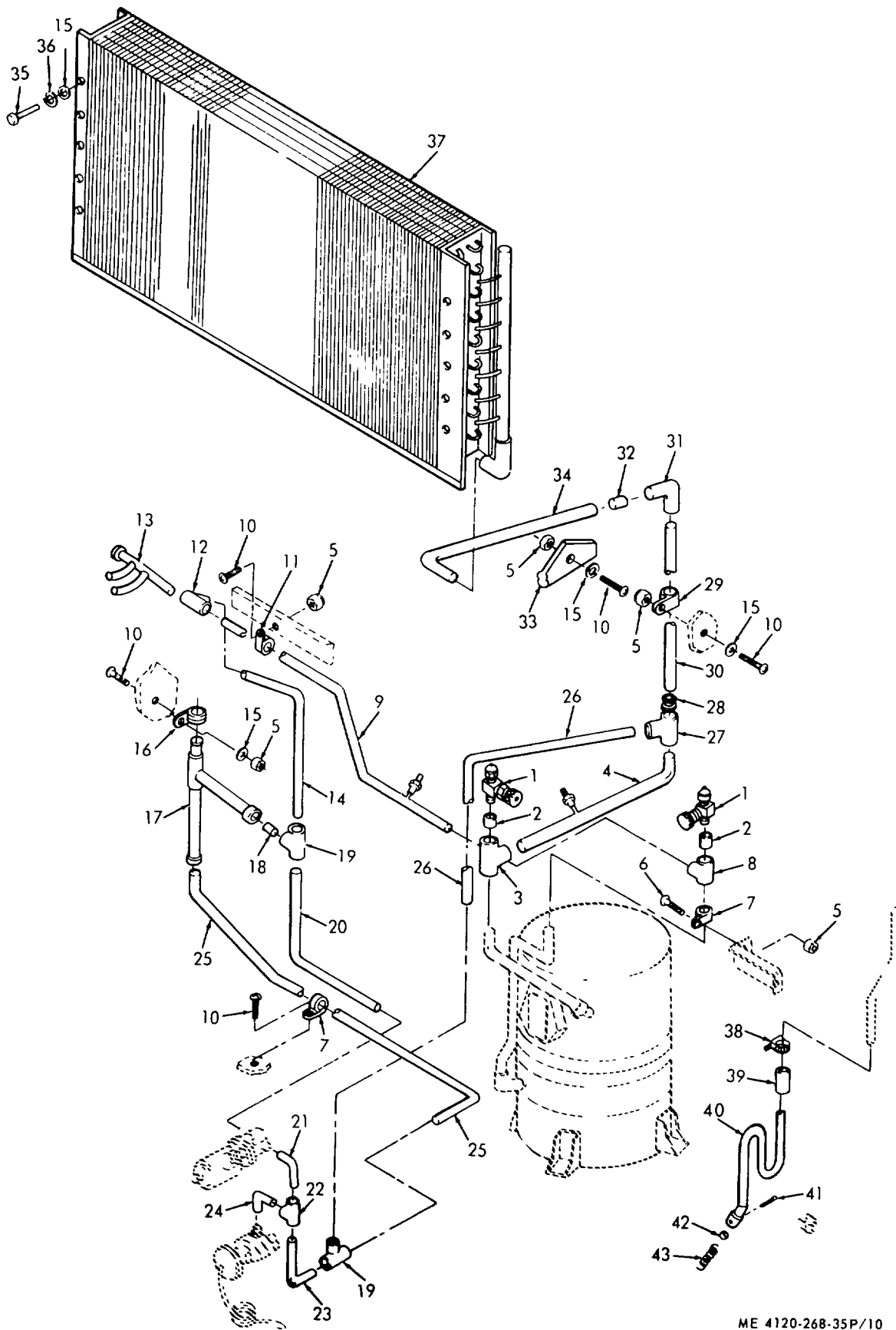


Figure 9. Pressure Control Switches

ME 4120-268-35P/9



ME 4120-268-35P/10

Figure 10. Evaporator, Valves, Tubes and Fittings

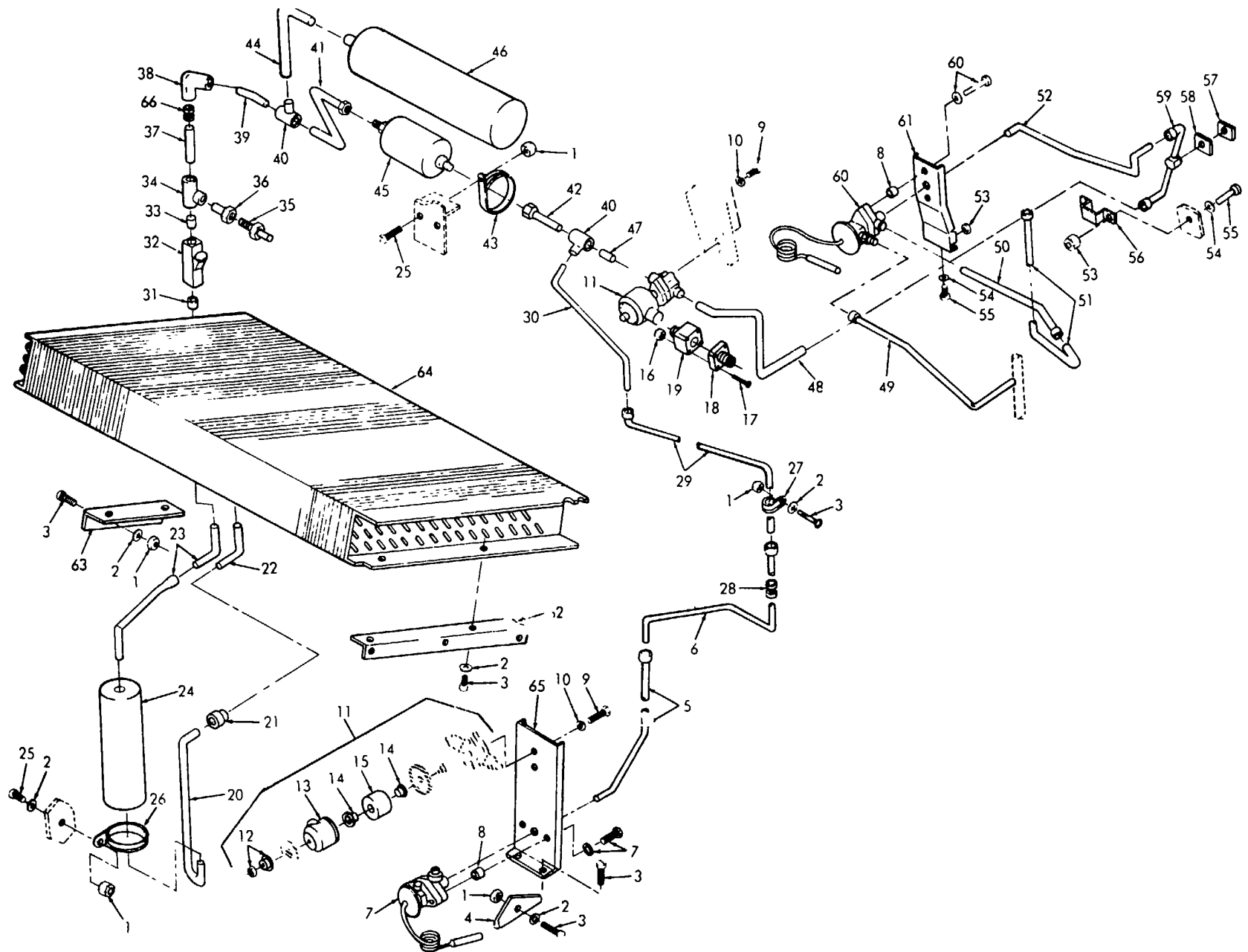


Figure 11. Condenser, De or, Receiver, Valves, Tubes and Fittings

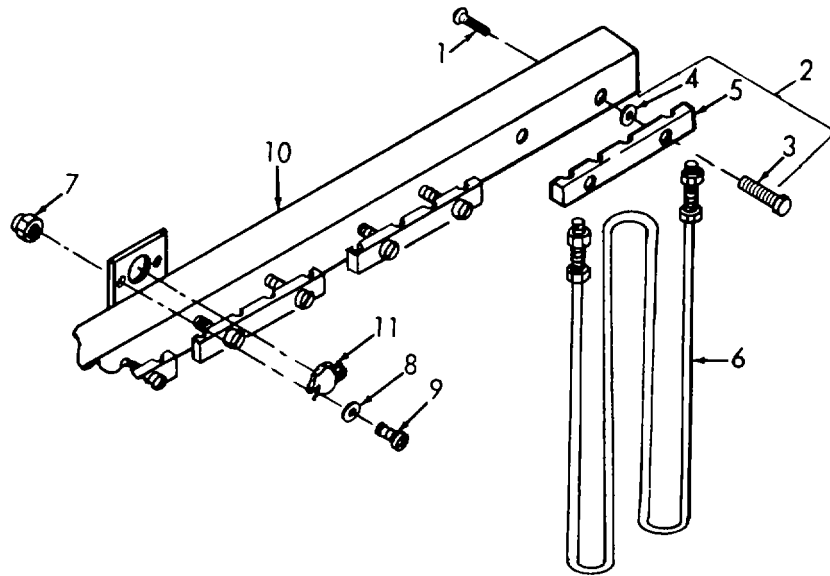


Figure 12. Heater

ME 4120-268-35P/6

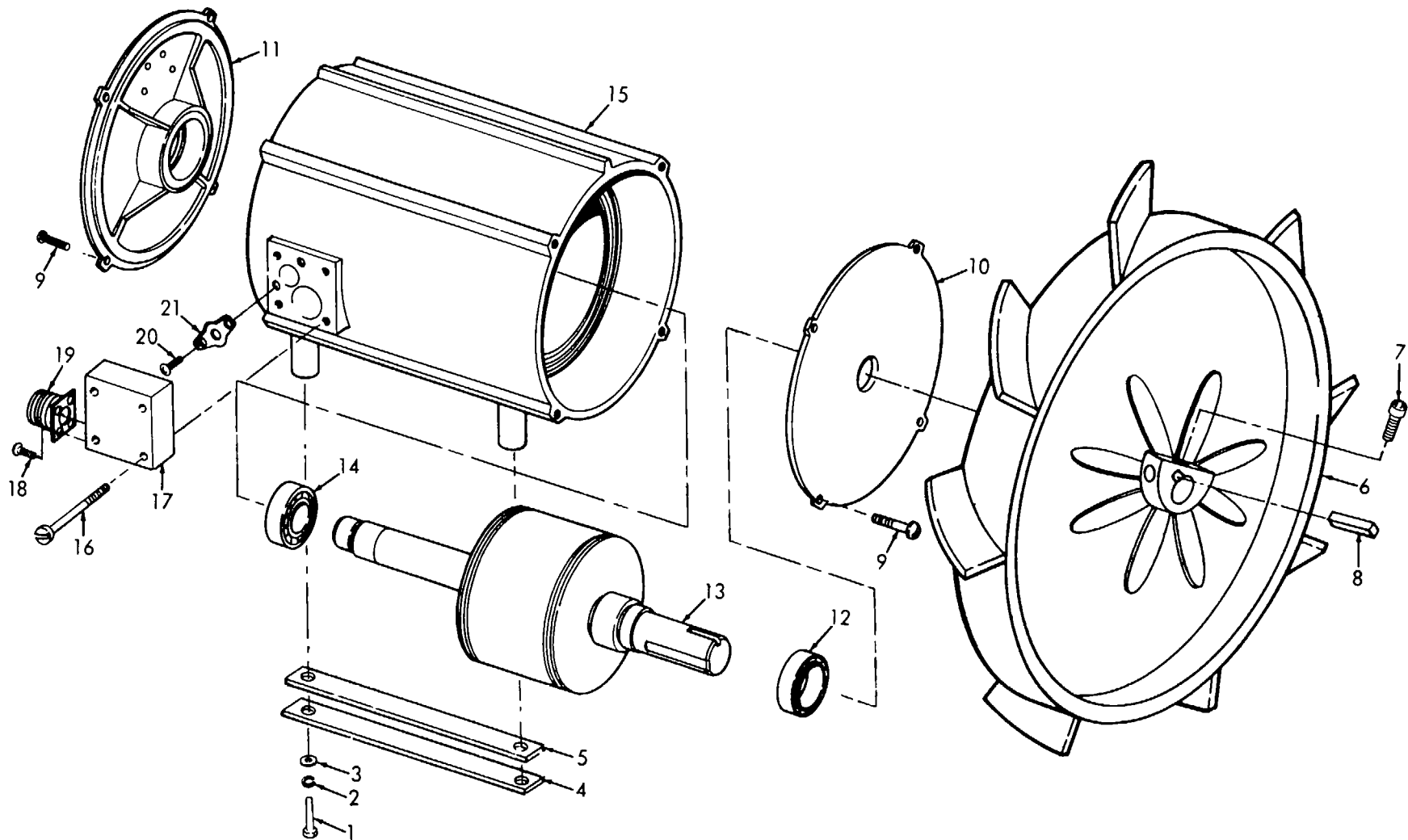


Figure 13. Condenser Fan and Motor
40

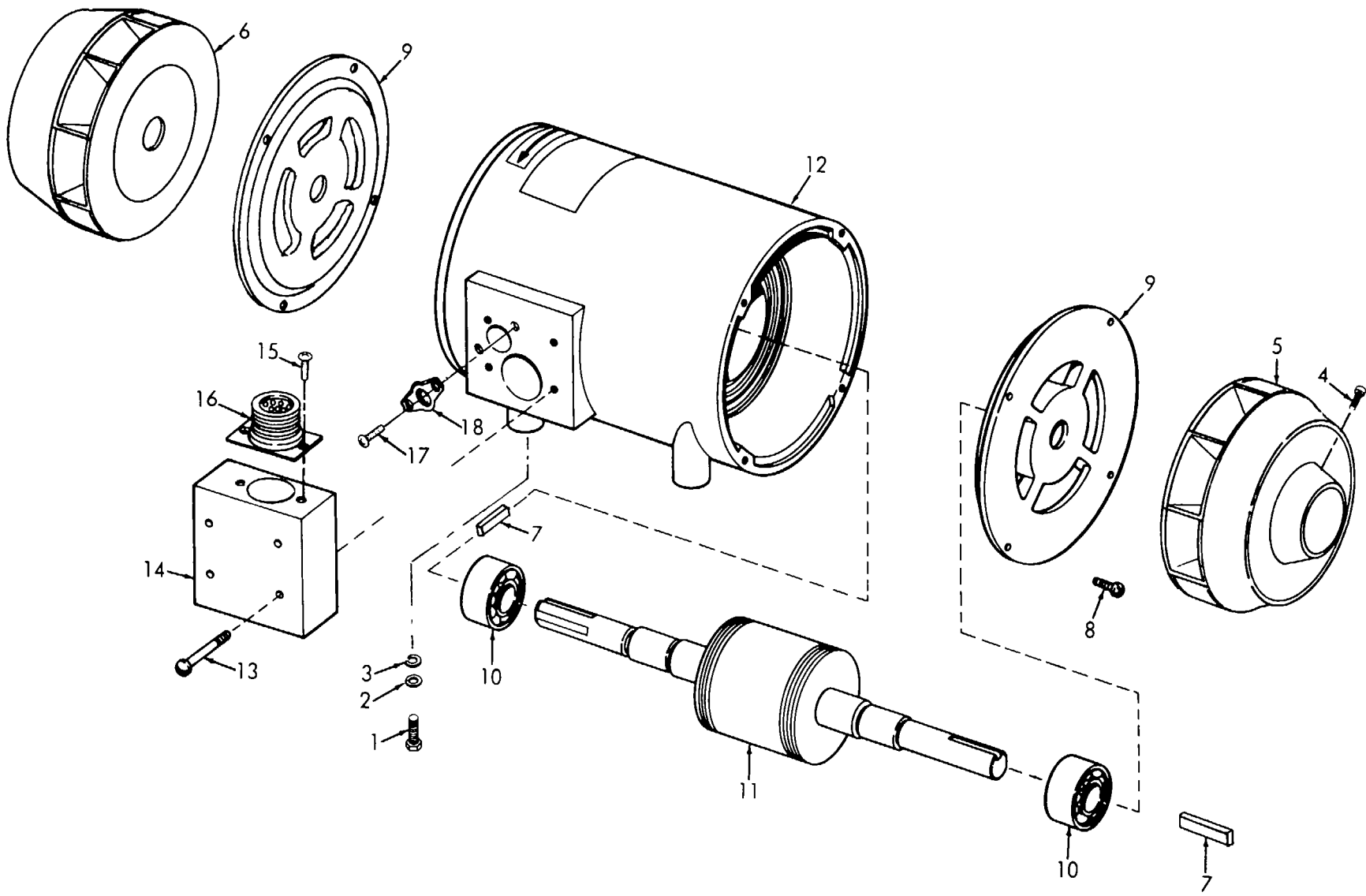


Figure 14. Evaporator Fan and Motor
41

**Section IV INDEX-FEDERAL STOCK NUMBER AND REFERENCE NUMBER
CROSS-REFERENCE TO FIGURE AND ITEM NUMBER**

<u>Stock Number</u>	<u>Figure No.</u>	<u>Item No.</u>	<u>Stock Number</u>	<u>Figure No.</u>	<u>Item No.</u>
4120-009-3717	10	17	5310-045-3299	2	4
4130-073-8405	11	35		5	7
4130-193-8488	1	30		11	10
4130-469-6758	1		5310-045-4007	R	2
4130-469-4759	7	14		9	6
4130-939-0974	2	6	5310-061-7325	2	15
4130-981-6616	14	5	5310-061-7326	2	25
4810-493-2966	11	11		3	20
4820-936-3981	11	7		5	29
4820-936-3982	11	60		10	5
4820-940-8105	10	1		11	1
4820-986-8082	11	32	5310-081-4219	1	3R
5305-012-0612	13	9		2	23
5305-013-2636	13	15		13	3
	14	15	5310-082-1404	6	5
5305-018-3878	4	2	5310-167-1302	6	15
5305-043-1942	3	1	5310-197-2298	5	10
	4	1		9	2
5305-068-0505	1	46		11	16
5305-175-3230	2	18	5310-198-3703	4	3
5305-206-0512	8	1	5310-285-7003	4	20
5305-206-0513	8	6	5310-322-4529	7	3
5305-206-3466	14	4	5310-407-9566	13	2
5305-206-8156	13	16	5310-550-0284	5	17
	14	13	5310-551-6309	A	4
5305-267-8985	2	33	5310-584-7800	3	18
5305-591-3320	8	3	5310-505-5437	6	3
5305-724-6799	2	20	5310-595-5523	7	4
5305-889-2999	9	3	5310-761-6582	6	1
	13	20	5310-809-4038	1	47
5305-889-3000	1	57	5310-809-4085	6	16
	4	14	5310-809-8546	1	34
	9	1		1	44
5305-689-3001	2	13		2	27
5305-958-5451	5	16		5	24
5305-984-4979	11	17		6	21
5305-984-4988	5	1		10	15
	6	4		11	2
5305-984-6193	1	27	5310-811-3494	2	9
	3	3	5310-129-9981	7	1
	5	6	5310-689-2544	1	56
	11	9		2	12
5305-984-6194	1	1		3	22
	2	1		4	15
	3	21	5310-889-2549	2	36
	11	55		3	4
	12	9		5	4
5305-984-6195	1	10		11	53
5305-984-6197	5	14		12	7
5305-989-7434	2	38	5315-234-1856	10	41
	3	6	5315-663-2329	2	22
	5	27	5320-874-4477	1	50
	12	1		4	6
5305-989-7435	1	32	5320-882-8388	6	12
	1	42	5320-932-1972	3	12
	2	28		REF	
	6	19	5340-543-4394	3	10
	10	6	5920-280-3175	r	20
	11	3	5920-939-5442	5	21
5305-993-0190	5	11	5925-465-9743	5	3
5305-993-1851	3	17	5930-716-1634	3	6
	5	31	5930-907-8948	3	16
5305-995-3444	5	22	5930-911-9095	9	8
5306-225-8496	14	1	5945-826-2216	5	26
5306-225-8498	13	1	5945-976-3007	5	12
5306-225-9089	1	37	6105-253-5519	14	
5306-722-0393	10	35	6105-253-5520	14	
5310-004-3296	5	23	6105-401-4616	13	
5310-010-3319	6	2			
5310-011-4986	1	2			
	2	7			
	5	8			
	11	54			
	12	8			
5310-012-0614	3	19			
5310-040-9566	14	3			
5310-045-3296	1	33			
	1	43			
	3	9			
	6	20			
	10	36			
5310-045-3299	1	28			

**Section IV INDEX-FEDERAL STOCK NUMBER AND REFERENCE NUMBER
CROSS-REFERENCE TO FIGURE AND ITEM NUMBER**

<u>Reference No.</u>	<u>Mfg. Code</u>	<u>Figure No.</u>	<u>Item No.</u>	<u>Reference No.</u>	<u>Mfg. Code</u>	<u>Figure No.</u>	<u>Item No.</u>
AC42H	61957	3	12	C164	78462	11	45
	61957	REF		C4525-106-3	60532	11	33
A043H	61957	A	12	C4525-106-7	60532	11	47
AK41H	61957	1	4	C4525-106-8	60532	11	37
	61957	1	52	C4525-116	60532	11	19
	61957	6	0	C4525-124	60532	1	
	61957	9	11	C4525-1255-17	60532	4	12
AK42H	61957	1	S0	C4525-203	50932	5	2
	61957	4	6	C4525-206-1	60532	3	3
AL18-4-5	31234	1	30	C4525-208-1	60532	2	
AL27-88-12-5	31234	2	6	C4525-228-1	60'32	2	21
AN3-4A	88044	10	35	C4525-241-21	60532	1	60
AN316-7R	88044	6	15	C4525-266-1	60532	6	11
AN515-6-5	88044	9		C4525-268-1	60532	6	6
AN515-6-8	88044	9	1	C4525-269	0532	6	13
AN520-10-5	88044	8	3	C4925-270	60532	6	
A19AGF9	92578	3	6	C4525-281	60532	10	
A2301-8958	60532	4	9	C4525-326-1	60532	11	
A2301-PS59	60532	4	8	C4525-354	60K32	4	16
A4525-229-1	60532	2	10	C4525-391-1	60532	1	20
A4525-29L-48	60532	5	13	C4525-392-1	60532	1	19
A4525-291-75	60532	6	18	C4525-407	60532	5	9
A4525-293-68	60532	3	5	C4525-408-2	60532	5	
A4525-293-82	60532	5	30	C4525-417-1	60532	2	8
A4525-400	60532	1	14	C4525-42-2	60532	10	18
A4525-403	60532	1	11	C4525-432-9	60532	11	8
A4525-477	60532	1	48	C4525-435-1	60532	10	20
A4525-498	60532	4	4	C4525-436-1	60532	10	23
A4525-502	60S32	4	21	C4525-446	60532	11	49
A4525-532	60532	9		C4525-447-1	60532	11	52
A4525-540-1	60532	12		C4525-465-1	60532	10	25
A4525-594-1	60532	3	15	C4525-467-1	60532	11	46
A4525-595-1	60532	3	3	C4525-469	60532	10	9
A4525-668	60532	10	37	C4525-470-1	60532	11	62
A4525-682	60532	11	64	C4525-472-1	60532	11	23
A4525-709-1	60532	7		C4525-473-1	60532	11	20
A4525-709-2	60532	7		C4525-474-1	60532	11	63
A4525-740-4	60532	7		C4525-524-1	60532	1	29
A4525-740-5	60532	7		C4525-530	60532	9	4
BAL25	60532	10	42	C4525-535	60532	2	34
BH525-496-1	60532	5		C4525-549	60532	1	
B4331-2308-2	60532	7	15	C4525-567-1	60532	1	45
B4525-131	60532	9	9	C4525-580-1	60532	12	2
B4525-196-2	60532	1	59	C4525-588-1	60532	3	14
B4525-196-3	60532	1	58	C4525-597	60532	3	11
	60532	2	14	C4525-689-1	60532	1	36
	60532	8	7	C4525-703-2	60532	1	12
B4525-244-1	60532	2	41	C4525-708-1	60532	7	9
B4525-249-21	60532	1		C4525-734-4	60532	7	14
B4525-275	60532	6		C4525-761-1	00532	1	39
B4525-280	60532	10	40	C4525-761-2	60532	1	40
B4525-307-24	60532	2	16	C4525-761-3	60532	13	4
B4525-316-1	60532	1	35	C4525-761-4	60532	13	5
B4525-317-1	60532	1	35	C4525-762-1	60532	2	39
B4525-338-2	60532	5		C4525-785	60532	7	
B4525-368-1	60532	14		C4525-787	60532	11	56
B4525-368-2	60532	14		C7968-7614-541	78553	1	49
B4525-386-1	60532	4	11	DT12104	70255	11	7
B4525-387-1	60532	4		D4341-1505	60532	7	
B4525-393-1	60532	1	21	D4524-2058	60532	14	4
B4525-394	60532	1		D4524-6038-1	60532	2	35
B4525-420	60532	11	61	D4525-123-1	60532	1	23
B4525-429	60532	11	46	D4525-128-1	60532	2	3
B4525-434-1	60532	11	65	D4525-128-2	60532	2	2
B4525-459	60532	5	28	D4525-231-1	60532	1	1R
B4525-480	60532	1		D4525-254-1	60532	12	5
B4525-500	60532	4	18	D4525-437-1	60532	11	50
B4525-504	60532	4	22	D4525-435-1	60532	11	51
B4525-525	60532	1	41	D4525-439-1	60532	11	30
B4525-529	60532	12	10	D4525-440-1	60532	10	34
B4525-537-1	60532	1	7	D4525-441-1	60532	11	42
B4525-538	60532	2	37	D4525-443-1	60532	10	30
B4525-539	60532	2		D4525-444-1	60532	10	33
B4525-590	60532	3	23	D4525-445	60532	10	4
B4525-596	60532	3		D4525-448	60532	11	41
B4525-72	60532	11	24	D4525-460-1	60532	10	24
B4525-727	60532	8	5	D4525-461-1	60532	10	21
B4525-749	60532	2	5	D4525-462-1	60532	10	26
B4525-770	60532	1	13	D4525-463-1	60532	10	14
CMP78	60532	11	4	D4525-464-1	60532	11	5
COV351	60532	7	12	D4525-466-1	60532	11	6
C13853-1420	78553	4	13	D4525-478-1	60532	11	29

**Section IV INDEX-FEDERAL STOCK NUMBER AND REFERENCE NUMBER
CROSS-REFERENCE TO FIGURE AND ITEM NUMBER**

<u>Reference No.</u>	<u>Mfg. Code</u>	<u>Figure No.</u>	<u>Item No.</u>	<u>Reference No.</u>	<u>Mfg. Code</u>	<u>Figure No.</u>	<u>Item No.</u>
D4525-479-1	60532	11	39	MS3102R 123P	96906	11	18
D4525-493-2	60532	2	25	MS3102R16-10P	96906	13	19
D4525-533-1	60532	2	30	MS35190-239	96706	5	16
D4525-579	60532	2	29	MS35206-214	96906	5	11
D4525-707-1	60532	7	7	MS35206-217	96906	9	3
D4525-784-1	60532	7	5		96906	13	20
D4525-792-1	60532	3	24		96906	14	17
D4525-794-1	60532	2	32	MS35206-222	96906	11	17
D4525-845-1	60532	11	22	MS35206-228	96906	5	1
E4525-617	60532	2	11		96906	6	4
E4525-632	60532	1	31	MS35206-230	96906	1	57
FAN183	60532	14	5		96906	2	13
FAN296	60532	14	6		96906	4	14
FAN297	60532	13	6		96906	9	1
FR30SN024	06 5	5	12	M535206-234	96906	3	21
F09B2ROV16-10A	81349	5	20	MS35206-245	96906	1	27
F39155-08	15453	1	5		96906	3	3
F39155-3	15653	1	6		96906	4	19
	15653	1	53		96906	5	6
F39155-4	15653	1	51		96906	11	9
GKT479	60532	11	57	MS35206-246	96906	1	1
G1152	79499	2	40		96906	2	1
HSE45	60532	10	39		96906	11	55
INS128	60532	7	13		96906	12	9
KAW5	71400	5	21	MS35206-247	96906	1	10
MS15795-708	96906	3	LB	MS35206-249	60532	5	14
MS171499	96906	2	22	MS35206-277	96906	9	5
MS191SDG50	96906	11	26	MS35207-210	96906	10	10
MS20066-146	96906	14	7		96906	11	25
MS20066-147	96906	13	8	MS35207-263	96906	2	38
MS21044N04	96906	5	10		96906	3	8
MS21044N08	96906	2	9		96906	5	27
	96906	4	20		96906	12	1
MS21044N04	96906	9	2	NS35207-264	96906	1	32
	96906	11	16		96906	1	42
MS21045-06	96906	1	56		96906	2	28
	96906	2	12		96906	6	19
	96906	3	22		96906	10	6
	96906	4	15		96906	11	3
MS21045-08	96906	2	36	MS35207-266	96906	5	22
	96906	3	4	MS35207-267	96906	3	17
	96906	5	4		96906	5	31
	96906	11	53	NS35224-65	96906	14	8
	96906	12	7	MS35242-73	96906	13	9
MS21045-3	96906	2	26	MS35336-9	96906	5	17
	96906	3	20	MS35338-41	96906	8	2
	96906	5	29		96906	9	6
	96906	10	5	MS35338-42	96906	1	28
	96906	11	1		96906	2	4
MS21045-4	96906	2	15		96906	5	7
MS21062-06	96906	6	10		96906	11	10
NS21318-14	96906	2	18	MS35338-43	96906	1	33
NS21919DG10	96906	10	7		96906	1	43
MS219190G12	96906	10	i1		96906	3	9
MS219190G14	96906	10	29		96906	5	23
MS219190G20	96906	10	16		96906	6	20
MS219190G48	96906	11	43		96906	10	36
MS219190G6	96906	3	10	MS35338-45	96906	13	2
	96906	11	27		96906	14	3
MS24665-155	96906	10	41	M535340-43	96906	8	4
MS27131-15K	96906	1	54	MS35490-1	96906	3	7
NS27131-19K	96906	6	14		96906	9	10
NS27183-1	96906	14	2	MS35490-11	96906	11	28
MS27183-L00	96906	1	47	MS35490-14	96906	11	66
MS27183-12	96906	1	38	MS35490-22	96906	10	28
	96906	2	23	MS35490-34	96906	a	10
	96906	13	3	MS35649-2312	96906	7	1
MS27183-16	96906	6	16	MS35650-102	96906	3	19
MS27183-6	96906	6	5	MS35842-11	96906	10	38
MS27183-7	96906	1	2	MS35914-108	96906	4	5
	96906	2	7	MS51964-51	96906	2	20
	96906	5	8	MS51967-2	96906	6	1
	96906	11	54	MS90725-31	96906	14	1
	96906	12	8	MS90725-33	96906	13	1
MS27183-8	96906	1	34	NS90726-IB	96906	2	33
	96906	1	44	MS90726-34	96906	1	37
	96906	2	27	MS90726-5	96906	1	46
	96906	5	24	MWH20A0	82646	13	21
	96906	6	21	M1H33A0	82646	13	21
	96906	10	15	MWH39A0	82646	14	18
	96906	11	2	MWJ33A0	82646	14	8
MS3P02R14S7P	96906	14	16	NAS1031A06	80205	9	12

**Section IV INDEX-FEDERAL STOCK NUMBER AND REFERENCE NUMBER
CROSS-REFERENCE TO FIGURE AND ITEM NUMBER**

<u>Reference No.</u>	<u>Mfg. Code</u>	<u>Figure No.</u>	<u>Item No.</u>	<u>Reference No.</u>	<u>Mfg. Code</u>	<u>Figure No.</u>	<u>Item No.</u>
NAS1297-4-4	80205	2	17	40537-7	71286	1	22
NAS1297-4-6	80205	2	31	4002N	71286	1	24
0B241	93781	11	11	4331-2308-1	60532	7	15
PLV128	60532	1	55	4385-0C5-00	71400	12	6
RB175	86797	3	2	4515	71400	5	19
R4G	71286	1	25	4715-22	64731	14	
SAK16	78462	11	59	5JX100MODIFIED	56289	6	17
SCR325	60532	13	7	5939X4	58553	10	1
SPC40	60532	7	2	605JJ2502-6	75382	5	15
SPCSI	60532	11	58	7015-4	64731	13	
SPG55	93232	10	43	7025-6	64731	13	
SPG58	60532	7	11	71-212-4MG6	74193	5	3
SS0257	58849	6	8	71-212-SM66	74193	5	3
TCL300HWI20	70255	11	60	757230	93781	11	15
TYPECAI1249	82647	12	11	802A8S	58553	11	32
WAS125	60532	7	4	812-2	75382	8	9
WAS127	60532	7	3	8912K216	15605	3	16
WC106W1725	41947	10	32	9242P	64731	13	17
WC400RWO119	41947	11	21	926303	64731	14	
WC403W1312	41947	11	31	9315P	64731	14	14
WC4051526	41947	11	36	9565H2B	15605	5	5
WC417A7812	41947	10	2	9565H94	15605	5	26
WE500W2022	41947	7	10				
WE500W2022	41947	11	38				
WE500W2034	41947	7	8				
	41947	10	31				
WE503W2334	41947	7	6				
WT600W4001	41947	10	22				
	41947	11	34				
WT600W4002	41947	11	40				
WT600W4009	41947	10	19				
WT600W4018	41947	10	12				
WT600W4029	41947	10	8				
WT600W4033	41947	10	27				
WT600i4041	41947	10	3				
XX78328-20	90763	1	3				
0B3-141	93781	11	12				
0B3-27	93781	11	13				
01-005248-084	64731	14	10				
01-005248-085	64731	13	12				
01-005248-086	64731	13	14				
02-009312-000	64731	14	9				
02-009486-001	64731	14	12				
02-009922-000	64731	13	10				
02-C09923-000	64731	13	11				
02-010391-009	64731	14	11				
02-010794-002	64731	13	13				
02-010795-001	64731	13	15				
02-010795-002	64731	13	13				
02-010909-001	64731	14	12				
02-010809-002	64731	14	1L				
02-10794-001	64731	13	15				
10-006	12881	6	7				
	12881	REF					
12-11-203-12	94222	4	9				
12-11-504-12	94222	1	17				
12-11-607-12	94222	12	3				
12-11-613-12	94222	1	15				
12-11014-12	94222	1	16				
	94222	4	10				
	94222	12	4				
12-1102013	94222	4	7				
210APIOAN	92578	9	8				
210P40AN	92578	9	7				
22010	75382	5	25				
237AVIL70237-142	81997	10	17				
244-16	71286	1	26				
2819	71400	5	18				
3MP25	93781	11	14				
3001X4-540	59553	11	35				
3502-18-36S	78189	2	24				
35566	22694	4	17				

<u>ITEMS NOT ILLUSTRATED</u>			
<u>Stock Number</u>		<u>Group Number</u>	
5320-882-1388		01	
5320-932-1972		01	
5935-578-2712		08	
5935-816-8644		08	
5340-598-0597		08	
5970-082-3942		08	
5970-990-9912		08	

<u>Reference No.</u>	<u>Mfg. Code</u>	<u>Group No.</u>
A4525-261	60560	01
B525-612	60532	08
B11525-613	60532	08
B4525-614	60532	08
B4525-615	60532	08
B4525-616	60532	01
C4525-209-1	60532	01
C4525-211-1	60532	01
C4525-220-1	60532	01
C4525-221-1	60532	01
C4525-277-1	60532	01
C4525-763-1	60532	01
C4525-76t-1	60532	01
C4525-765-1	60532	01
C4525-767-1	6532	01
C4525-768-	60532	01
D4525-141-1	632	01
PLT199	60532	05

TM 5-4120-268-35P

By Order of the Secretary of the Army:

TM 5-4120-268-35P

Official:

KENNETH G. WICKHAM,
*Major General, United States Army,
The Adjutant General.*


W. C. WESTMORELAND,
*General, United States Army,
Chief of Staff.*

Distribution:

To be distributed in accordance with DA Form 12-25, Section III, (qtyqr block no. 555) Direct and General Support maintenance requirements for Air Conditioners, 36,000 BTU, Floor Mounting.

☆ U.S. GOVERNMENT PRINTING OFFICE : 1990 0 - 262-912 (30709)

RECOMMENDED CHANGES TO EQUIPMENT TECHNICAL PUBLICATIONS

 <p style="font-size: small; margin: 0;"><i>THEN...JOT DOWN THE DOPE ABOUT IT ON THIS FORM. CAREFULLY TEAR IT OUT, FOLD IT AND DROP IT IN THE MAIL.</i></p>		SOMETHING WRONG WITH PUBLICATION	
		FROM: (PRINT YOUR UNIT'S COMPLETE ADDRESS)	
		DATE SENT	
PUBLICATION NUMBER		PUBLICATION DATE	PUBLICATION TITLE
IN THIS SPACE, TELL WHAT IS WRONG AND WHAT SHOULD BE DONE ABOUT IT.			
BE EXACT PIN-POINT WHERE IT IS			
PAGE NO.	PARA-GRAPH	FIGURE NO.	TABLE NO.
PRINTED NAME, GRADE OR TITLE AND TELEPHONE NUMBER		SIGN HERE	

The Metric System and Equivalents

Linear Measure

1 centimeter = 10 millimeters = .39 inch
 1 decimeter = 10 centimeters = 3.94 inches
 1 meter = 10 decimeters = 39.37 inches
 1 dekameter = 10 meters = 32.8 feet
 1 hectometer = 10 dekameters = 328.08 feet
 1 kilometer = 10 hectometers = 3,280.8 feet

Weights

1 centigram = 10 milligrams = .15 grain
 1 decigram = 10 centigrams = 1.54 grains
 1 gram = 10 decigrams = .035 ounce
 1 decagram = 10 grams = .35 ounce
 1 hectogram = 10 decagrams = 3.52 ounces
 1 kilogram = 10 hectograms = 2.2 pounds
 1 quintal = 100 kilograms = 220.46 pounds
 1 metric ton = 10 quintals = 1.1 short tons

Liquid Measure

1 centiliter = 10 milliliters = .34 fl. ounce
 1 deciliter = 10 centiliters = 3.38 fl. ounces
 1 liter = 10 deciliters = 33.81 fl. ounces
 1 dekaliter = 10 liters = 2.64 g#ons
 1 hectoliter = 10 dekaliters = 26.42 gallons
 1 kiloliter = 10 hectoliters = 264.18 gallons

Square Measure

1 sq. centimeter = 100 sq. millimeters = .155 sq. inch
 1 sq. decimeter = 100 sq. centimeters = 15.5 sq. inches
 1 sq. meter (centare) = 100 sq. decimeters = 10.76 sq. feet
 1 sq. dekameter (are) = 100 sq. meters = 1,076.4 sq. feet
 1 sq. hectometer (hectare) = 100 sq. dekameters = 2.47 acres
 1 sq. kilometer = 100 sq. hectometers = .386 sq. mile

Cubic Measure

1 cu. centimeter = 1000 cu. millimeters = .06 cu. inch
 1 cu. decimeter = 1000 cu. centimeters = 61.02 cu. inches
 1 cu. meter = 1000 cu. decimeters = 35.31 cu. feet

Approximate Conversion Factors

<i>To change</i>	<i>To</i>	<i>Multiply by</i>	<i>To change</i>	<i>To</i>	<i>Multiply by</i>
inches	centimeters	2.540	ounce-inches	Newton-meters	.007062
feet	meters	.305	centimeters	inches	.394
yards	meters	.914	meters	feet	3.280
miles	kilometers	1.609	meters	yards	1.094
square inches	square centimeters	6.451	kilometers	miles	.621
square feet	square meters	.093	square centimeters	square inches	.155
square yards	square meters	.836	square meters	square feet	10.764
square miles	square kilometers	2.590	square meters	square yards	1.196
acres	square hectometers	.405	square kilometers	square miles	.386
cubic feet	cubic meters	.028	square hectometers	acres	2.471
cubic yards	cubic meters	.765	cubic meters	cubic feet	35.315
fluid ounces	milliliters	29.573	cubic meters	cubic yards	1.308
pints	liters	.473	milliliters	fluid ounces	.034
quarts	liters	.946	liters	pints	2.113
gallons	liters	3.785	liters	quarts	1.057
ounces	grams	28.349	liters	gallons	.264
pounds	kilograms	.454	grams	ounces	.035
short tons	metric tons	.907	kilograms	pounds	2.205
pound-feet	Newton-meters	1.356	metric tons	short tons	1.102
pound-inches	Newton-meters	.11296			

Temperature (Exact)

°F	Fahrenheit temperature	5/9 (after subtracting 32)	Celsius temperature	°C
----	------------------------	----------------------------	---------------------	----

PIN: 005782-001